



Parkinson's
Foundation

20
22

ANNUAL
REPORT



OUR MISSION

The Parkinson's Foundation makes life better for people with Parkinson's disease by improving care and advancing research toward a cure. In everything we do, we build on the energy, experience and passion of our global Parkinson's community.

\$24.9M

invested in Parkinson's research and clinical care in 2022.



In 2022, we embarked on a new strategic plan: "A Roadmap to Better Parkinson's Outcomes." This strategic plan guides the impact we will achieve through 2025 and highlights the three core pillars of our mission: research, care and education.

Our mission remains urgent — to help all people affected by Parkinson's disease (PD) feel engaged and empowered to live better lives. The core principles of our strategic plan are to focus on people with and affected by PD; collaborate with others to drive the field forward; ensure our work is evidence-based and evidence-generating; and aim for maximum impact, scalability, sustainability and measurability in all of our programs.

Our **research vision** is that new discoveries will prevent, control and ultimately cure the disease. We continue to invest in the most promising research ideas by funding individual investigators, as well as institutions. In 2022, we dedicated nearly \$25 million to Parkinson's research and clinical care.

Our **care vision** is that all people with PD have access to equitable and quality care. We increased our Global Care Network by launching a new Comprehensive Care Centers designation to expand our national footprint.

Finally, our **education vision** is that all people affected by PD have the information and resources they need. We continue to fund local community grants across the country, increase our resources in Spanish and form strategic partnerships with organizations that serve populations of focus.

We also mark the one-year anniversary of our Reach Further fundraising campaign. We have raised nearly \$10 million of the \$30 million dollar goal thus far thanks to people like Joe Dunn, a Reach Further campaign co-chair. For Joe, the Foundation's three-priority approach to research, care and community support matters tremendously: "The thing that sets the Parkinson's Foundation apart is the community outreach and education pieces, in addition to research. Ultimately, you need a holistic approach to deal with a complex disease like PD."

Thank you for helping us reach further to improve the lives of the one million Americans living with PD today.

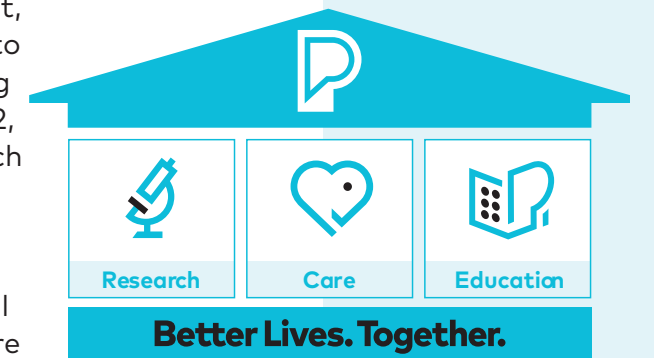
Sincerely,



John L. Lehr
President and Chief Executive Officer



Note from our CEO





7,500
people

with Parkinson's received genetic testing and counseling through PD GENERation.

PARTICIPANTS



58%
men



42%
women



14%

of participants have a genetic form of Parkinson's

PD GENERation

MAPPING THE FUTURE OF PARKINSON'S DISEASE

Global Genetics Study Update

Genetics is the first step in solving Parkinson's disease (PD). Understanding how and why Parkinson's and genetics fit together is a mystery the Parkinson's Foundation is looking to solve through our landmark study, **PD GENERation: Mapping the Future of Parkinson's Disease.**

In 2022, we expanded our study and made access to genetic testing possible for people with Parkinson's in all **50 U.S. states, Puerto Rico, the Dominican Republic and Canada.** In the next two years, we will introduce PD GENERation to Israel and other countries, bringing a new level of diversity and depth to Parkinson's genetics research, which can lead to greater insights.

Through the expansion of our study to more populations, we are bringing diversity to genetics data, which will in turn accelerate the pace of research to help all people with Parkinson's.

In the next two years, we will complete our goal of providing genetic testing and counseling at no cost to 15,000 people with Parkinson's — establishing the largest Parkinson's genomic dataset in North America. These data aim to accelerate trials and research and are exactly what we need to remove the barriers in the way of developing new medicines and significant advances in research.

All PD GENERation participants can immediately utilize their genetic results to help steer treatment options and take advantage of clinical studies that are newly accessible to them because they know their genetic status. Genetics can not only help us uncover potential causes of Parkinson's, but results from this study can lead to improved treatments and care for everyone with Parkinson's.

Enroll and help us further PD genetics research at Parkinson.org/PDGENERation.

Enjoying the Delicious Parts of Life: How Marcia Mondavi Borger Finds Hope Living with Parkinson's

In the 14 years that Marcia Mondavi Borger has been living with Parkinson's disease (PD), she's taught herself how to find calm in the smaller, delicious parts of life. Exercise, being involved with the Parkinson's Foundation and visiting her family all help. "I go to California as often as I can for big family dinners that my children, nieces and nephews have taken over," Marcia said. "When I go, it's to be surrounded by family and food, and take in the marvelous sites and smells of a vineyard — I'm happier and calmer."



"Find a great doctor who will put all the pieces together for you. The Foundation's Global Care Network is vital to helping connect people with Parkinson's to hospitals and universities that treat us and advance treatments. The Foundation is working to reach even more people who need expert care."

- Marcia, living with Parkinson's

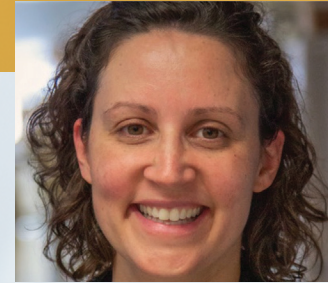
Marcia is no stranger to change. "Born and raised in Napa Valley, I lived through watching the crops evolve from fruits and nuts to grapes, and my father's passion along with it." Later in life, it was a small, physical change that led to Marcia's Parkinson's disease diagnosis. "My first neurologist said it was a Parkinsonism tremor, not Parkinson's, and told me to carry a heavy purse to disguise my tremor."

Soon after, Marcia found life-changing Parkinson's care with a new neurologist at Columbia University Irving Medical Center, a Parkinson's Foundation Center of Excellence, and then followed him to New York's Northwell Health.

Hope and a dry sense of humor help Marcia cope with Parkinson's. "I barely knew anything about Parkinson's. I often say that my husband, Tom, won the golden ticket — first he helped his father fight this disease, then his brother, now me. Each of us with a unique experience and progression." In 2017, Marcia found hope when she joined the Parkinson's Foundation board, helping make life better for people with Parkinson's, their families and care partners, like Tom.

Every day, Marcia works to conquer her symptoms. "It's getting harder to travel alone. And although I find solace that my Parkinson's has moved slowly, it gives me the time to get depressed. Some days, I have trouble finding words." She works on her mental and physical health through exercise. "The people I've met through the Parkinson's Foundation community grant classes are invigorating. I have boxed, tried Dance for PD, do chair yoga and walk the Triborough Bridge," Marcia said. "But there is nothing like taking long walks with my two grandsons in my family's vineyard."

Now more than ever, Marcia is determined to help the Foundation advance its urgent mission. "I am excited to be part of the Parkinson's Foundation because they work to get us through it. They have resources designed for care partners because they understand the impact this disease has on the entire family. Plus, they fund the researchers moving up the academic ladder. These things are all exceedingly important to help people with Parkinson's move forward and keep the hope alive for a cure."



Emily Mangano Rocha, PhD
 University of Pittsburgh,
 School of Medicine
 Department of Neurology
 Parkinson's Foundation
 Research Grantee

Emily Mangano Rocha, PhD, jumpstarted her research career after receiving a Parkinson's Foundation research grant. Dr. Rocha's research findings ultimately led to more than \$1.3 million in research funding and publication in 10 scientific journals.

"My two proudest accomplishments since receiving my Parkinson's Foundation Postdoctoral Fellowship are securing a tenure-track Assistant Professor position at the University of Pittsburgh — this seriously only happened as a result of the Fellowship, because it gave me the freedom that led me to find a connection between two prominent Parkinson's genes — and my first-authored published manuscript."

RESEARCH



\$24.9M
 invested in
 Parkinson's research
 and clinical care
 in 2022.



\$5.6M
 awarded across
 33 research grants
 in 2022.



7,500
 people with Parkinson's
 received genetic testing
 and counseling through
 our genetics study,
 PD GENERation.

Research will one day lead us to the new discoveries that prevent, better control symptoms of and ultimately cure Parkinson's disease. The cornerstone of our research strategy is to advance research through funding innovative studies, the brightest researchers and new programs in hopes that they can help identify the fastest lanes to new treatments.

We believe in taking risks when it comes to funding the scientists working to evolve treatments. Parkinson's Foundation research grantee Nitya Subrahmanian, PhD, at the University of Florida, is utilizing her lab to understand how we can protect the neurons that produce dopamine, while Giovanni

Bellomo, PhD, at the University of Perugia in Italy, is creating a diagnostic test that could detect Parkinson's earlier.

No one knows exactly what will work, but a PD research breakthrough can happen at any time, in any lab. In 2022, we funded **33 research grants**, totaling **\$5.6 million**.

We expanded our genetics study *PD GENERation: Mapping the Future of Parkinson's Disease*, making it more accessible for new communities. Designed to be inclusive, PD GENERation is offered in English and Spanish and is the most comprehensive at-home genetic test available, testing for seven genes related to Parkinson's.

PD GENERation data has already made an impact in the global research community. In 2022, the study was featured eight times across multiple international neurology and neuroscience meetings. Not only does this study help raise awareness and accelerate clinical trials but it also feeds results to researchers, advancing the field.

Scientists believe that a person has already lost half of their dopamine cells when diagnosed

with Parkinson's. Currently, there is no way to stop or reverse the loss. Our newest research center, Icahn School of Medicine at Mount Sinai, will study what leads to the loss of dopamine nerve cells and identify ways to help them survive. This can directly benefit as well as make progress on the development of a cure. Our five research centers each receive \$2 million to advance research through a minimum of three interconnected Parkinson's research studies that can lead to the next breakthrough.

Explore how we are advancing research at [Parkinson.org/Research](https://www.parkinson.org/Research).



Ronald Torrito
Living with Parkinson's
Helpline Caller

Ronald Torrito was worried about his Parkinson's diagnosis because he was only familiar with its advanced symptoms. He called the Parkinson's Foundation Helpline as a starting point and found the guidance he needed.

"It is really a comfort to know about the Foundation you are a part of and the support of the VA in the needs of us who depend on the VA to help us with our medical questions. It was really nice of you to talk to me about the promise of help in learning about the resources of the Parkinson's Foundation."

CARE



26,000

calls and emails answered through our toll-free Helpline, 1-800-4PD-INFO, in 2022.



10

new specialized PD centers joined our Global Care Network across 9 U.S. states, expanding access to care, in 2022.



143

registered nurse faculty have completed PD care training — and went on to teach 24,000 nursing students.

Though Parkinson's is the world's fastest-growing neurological disease, only 9% of people with Parkinson's receive care from a neurologist with specialized training. In 2022, we designated 10 new Global Care Network medical centers in the U.S. Each of these medical centers house a specialized team that practices the latest in Parkinson's treatments that aim to provide people with PD access to high-quality care when and where they need it.

Our newest designation, Comprehensive Care Center, was granted to six centers — five of which are in states that previously did not have a Foundation presence. Arkansas, Connecticut,

Hawaii, Louisiana and Michigan all now house a designated center that excels in Parkinson's care.

Increasing access to care is a goal we tackle from different angles. Our resources and initiatives are designed to empower people with Parkinson's and care partners to advocate for their best care, and train healthcare professionals to provide Parkinson's care rooted in best practices.

- We funded **\$1.1 million in movement disorders fellowships** to academic institutions for four neurologists and three nurse practitioners. Each fellow receives specialized Parkinson's training and first-hand care experience.

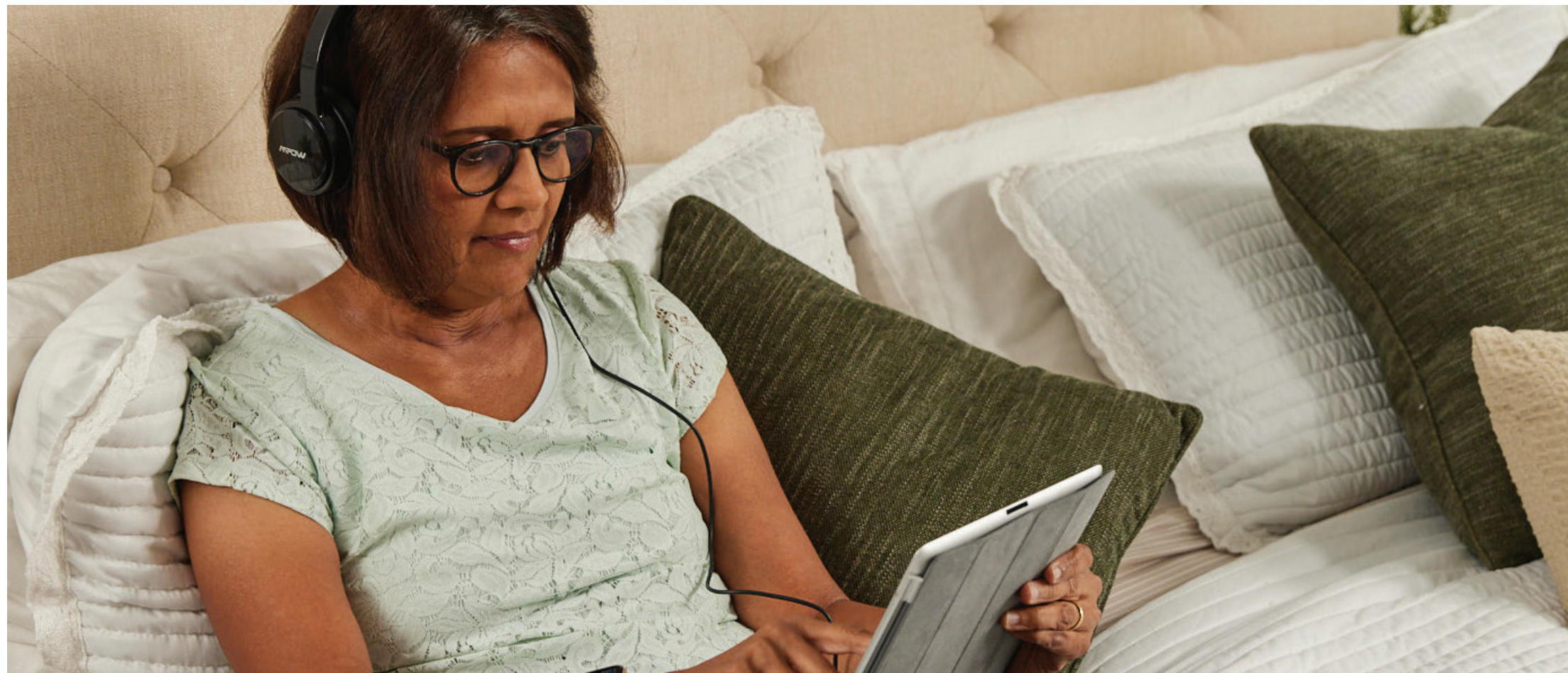
- We awarded **six nursing and physical therapy faculty** with \$10,000 each to launch projects in their local community and medical centers aimed to make life better for people with Parkinson's.

Last year, we earned the distinction to provide Joint Accreditation™ for Interprofessional Continuing Education courses. Being able to accredit Parkinson's courses makes us a leader in teaching health professionals how to better care for people with Parkinson's. This enables the Foundation to accredit

continuing education for multiple professions and reach more professionals caring for people with Parkinson's who may not have received Parkinson's training.

People with Parkinson's are at increased risk for complications once hospitalized. In addition to our Aware in Care hospital care kit, we recently launched the Hospital Care Initiative to ensure that all people with Parkinson's can trust that the hospital care they receive is based on care practices that support better outcomes.

Explore how we are expanding access to Parkinson's care at [Parkinson.org/FindingCare](https://www.parkinson.org/FindingCare).



Susan Brown
Living with Parkinson's
Featured in our national
Better Lives. Together. PSA

While Susan Brown of Atlanta, GA, still takes 20 pills a day and battles insomnia, in the four years since her diagnosis, she is not only settling into the reality of living with a progressive disease, but is learning how to approach life with a new-found enthusiasm.

"When I was first diagnosed, I needed to find my Parkinson's village. The Foundation has provided a framework for me to focus on putting a face to Parkinson's disease. It is a marathon that affects the whole family, and it is me. Serving on the Parkinson's Foundation Georgia Advisory Board has given me a sense of purpose and a way for my family to rally around the hope that a cure is on the way."

EDUCATION



137,180

free educational books
and 324,600 fact
sheets distributed.



\$2M

awarded to 137 local
Parkinson's programs,
engaging more than
75,000 people.



126,027

people registered for
local in-person and
virtual PD education
programs and events
across 24 new cities.

All people living with Parkinson's, care partners and family members should have the information and resources they need to live better. We design and support programs and resources that ensure key Parkinson's information is accessible, especially to populations of focus who live in geographic areas with limited access to care.

From local non-contact boxing classes in Anchorage, AK, to a mind and music program in Miami, FL, and the educational events and support groups in between, we funded **\$2.2 million** across **137 local Parkinson's programs**.

Our community grants program provides PD communities with health, wellness and education programs that make an impact on **8** |

their emotional and physical wellbeing.

We introduced new, essential Parkinson's information for Spanish speakers. In addition to a newly redesigned Spanish section of Parkinson.org, we launched an all-Spanish Facebook page to help connect our audience to resources. Populations of focus need access to research studies, which why our genetics study is designed in English and Spanish and has provided genetic testing and counseling to more than **500 Latino participants**.

Partnering with other organizations allows us to expand our reach while creating the greatest impact. Last year, we established and strengthened partnerships aimed to empower

and help populations of focus live better with Parkinson's.

- With **SAGE** we published a guide to help professionals at LGBTQ+ community centers and health centers provide better support to LGBTQ+ people with Parkinson's.
- Together with **Univision** we launched a four-part article series about Parkinson's highlighting critical resources.
- Alongside **BlackDoctor.org** we published an e-book about Parkinson's and the Black community, an article series and a Facebook Live educational event.

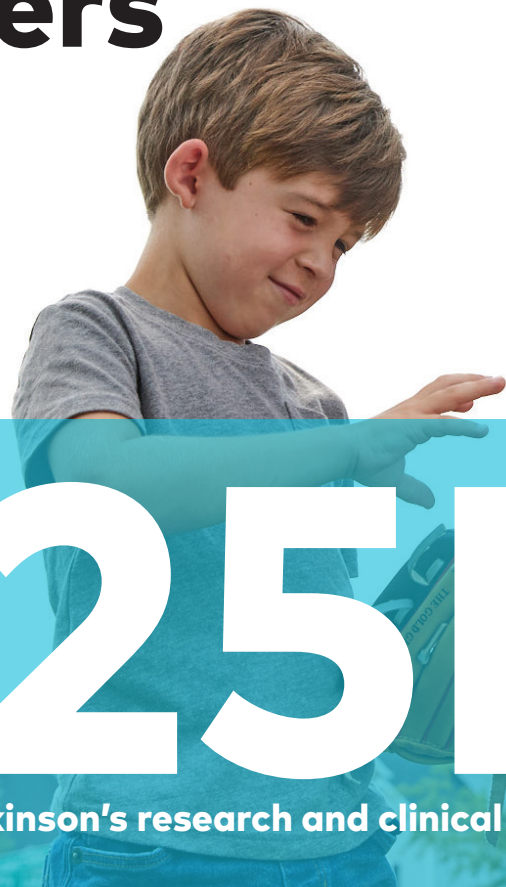
- With the **U.S. Department of Veterans Affairs**, we created a PD guide for veterans and care partners, hosted two national webinars and five community events.

We also launched our public service announcement, **Better Lives. Together.**, highlighting the stories of inspiring people who actively fight this disease every day. We achieved record-breaking nationwide reach, airing the PSA 43,720 times across radio and TV.

Explore how we are empowering and educating our local Parkinson's communities at [Parkinson.org/Resources](https://www.parkinson.org/Resources).

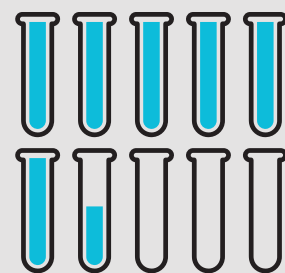
2022

by the numbers



\$425M

invested in Parkinson's research and clinical care since 1957.



646

scientists received Parkinson's Foundation funding since 2010.

276,000



people received vital counseling from Helpline specialists since 1998.



43,720

airings of our national PSA on radio and TV in its first three months.



472,440

podcast episode downloads of all time, in English and Spanish.



3,000

volunteers helped us make life better for people with PD across all 17 of our chapters.



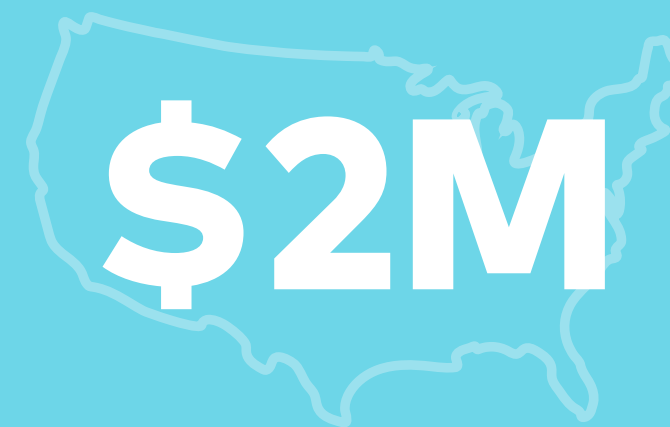
128,894

free, life-saving Aware in Care kits distributed to help people get better care in a hospital – with 3,849 kits delivered in Spanish.



7 million

people visited Parkinson.org, the go-to online Parkinson's resource, in 2022.



awarded to 137 local programs across 37 states, reaching more than 75,000 people with PD.

PD GENERation

MAPPING THE FUTURE OF PARKINSON'S DISEASE

7,500

people with Parkinson's received a genetic test and counseling session through our genetic Parkinson's study, PD GENERation.



toward PD GENERation goal of providing genetic testing to 15,000 people with Parkinson's.

Honor Roll



The Parkinson's Foundation gratefully acknowledges all our supporters who donated \$2,500 or more between July 1, 2021 and June 30, 2022.

Our generous donors allow us to further our mission to make lives better for people with Parkinson's and advance research toward a cure.

Thank you for your dedicated support.

\$1 Million and above

Sharron and Joseph Ashby
Hubert Fund of the Community
Foundation of Broward*
Estate of Rubin Ferziger
William K. & Naomi Kramer
Foundation
Sanofi-Aventis Recherche &
Development*
Estate of Michael T. Sheahan
Sherr and Nevard families

\$500,000-\$999,999

Estate of Dorothy Arrington-
Poythress
Mr. and Mrs. J. Gordon Beckham, Jr.
Tom and Marcia Mondavi
Borger Family*
Josephine Chu
CVS Health Foundation
Estate of Leonard Eisenberg
Estate of Beverly Newmeller
Estate of Suzanne McKinley Tice

\$250,000-\$499,999

Mona and Andy Albert*
Amneal Specialty
Pharmaceuticals
Biogen, Inc.
Joseph S. Dunn*
Elizabeth A. Geiser Revocable
Trust fbo Robert G. Barget

Rollin M. Gerstacker Foundation
Estate of Helen W. Gray
William F. Griffin*
Jerry Haar*
The Charles and Mary Heider
Family Foundation
Robert / Rosario Korn Family *
Kyowa Kirin
Estate of Blanche Ross
Simone Charitable Foundation, Inc.
Estate of Terry E. Stover
Sunovion Pharmaceuticals Inc.
Sutter Health
Yavitz Cypen Foundation, Inc.*

\$100,000-\$249,999

Abbott Laboratories
AbbVie, Inc.
ACADIA Pharmaceuticals, Inc.
The Applebaum Foundation
Avion Pharmaceuticals
Estate of Jules J. Bingham
Boston Scientific Corporation
Trust of Lewis D. Brounell
Estate of Anna Brown
Estate of Marjorie J. Coppo
Estate of Betty Jane Dunaway
Fairchild Martindale Foundation
Richard and Schuyler Field*
Estate of Ruth J. Jonas
Mr. and Mrs. Richard J. Kastner*

Michael and Ann Kay
Elaine and Ken Langone
Light of Day Foundation, Inc.
Estate of Margaret B. Lusta
Madigan Family Foundation
Wesley G. McCain and
Noreene Storrie
Trust of Daniel R. McGreevy
Medtronic
Sandra Milken
Richard and Shelley Friedland*
Amy P. Goldman Foundation
Estate of Deborah L. Gray
Estate of Tatjana Hollander
Estate of Robert J. Johnson
Estate of Robert L. Miller
William and Amy Moler*
Estate of Carl A. Nelson
Parkinson's Unity Walk
Estate of Janet L. Payne
Dr. Susan Pepe
Joshua and Melissa Raskin*
Right at Home, LLC
Estate of Ronnie J. Schauer
Estate of Paul W. Snyder, Jr.
Daniel and Whitney Sorensen*
The Dorothy Strelsin Foundation
Supernus
Estate of Robert D. Tice
Patricia and Leon Westbrook
Estate of Helen L Winall
World Parkinson Coalition, Inc.

\$50,000-\$99,999

ACORDA Therapeutics, Inc.
Adamas Pharmaceuticals
Andrew Adelson*
Estate of Marie A. Bareiszis
Estate of Jane E. Bebko
The Linda and Lenny Bell Family
Foundation
Estate of Marilyn Bernhard
The Margaret M. Bloomfield
Family Foundation
Estate of Gladys E. Champagne
Estate of Stephen Della Vendova
The Dubin Family
Frances and Beverly DuBose
Foundation, Inc.
Gary and Lea Anne Dunton*
Ross S. Evans
Mr. and Mrs. Bryan Fields

Don and Lorraine Freeberg
Foundation
Genentech, Inc. - Member of the
Roche Group
Gerald Z. Gibian
Estate of Shirley P. Gordon
The Don A. Hunziker Memorial
Foundation, Inc.
Senator Johnny Isakson
The Eleanor M. and Herbert D. Katz
Family Foundation, Inc.*
Margaret D. Lienemann Charitable
Trust
Long Island Community Foundation
Ro and Tom Manak*
W. James McNerney, Jr. Family
Foundation
Merz Therapeutics
Paul and Marcy Nathan
Neilia Lavalle Philanthropies*
Neurocrine Biosciences, Inc.
New York State Department of
Health
Patient Centered Outcomes
Research Institute (PCORI)
Estate of Bernice Selcow
The Smith Family Foundation
Lester Stevenson
Charitable Trust
Andrea L. Sussman
Sustainable Futures Fund
Stephen and Sherry Tarnok*
Luther G. Tweeten
Estate of Joyce R. Unger
The Wasily Family Foundation
Steve and Cindy Wolfe
Estate of Alan A. Woodard

\$25,000-\$49,999

Stephen and Marsha Ackerman
Craig and Darla Albert
The Batchelor Foundation, Inc.
Jane H. Berktoed Parkinson Fund,
a fund of Collaboratory
Boettcher Charitable
Remainder Trust
Dorothy Patricia Brewster in
Memory of Robert Brewster
Capistrant Parkinson's
Foundation Fund
Estate of Roseann B. Comstock
Nancy Dehmlow
Mr. and Mrs. James G. Dinan

*denotes multi-year pledge donor

Robert H. Drysdale Family Fund
Estate of Arlene Edmonds
Lou and Jim Eisenbrandt
Epic Charitable Fund
Robert and Linda Fetch*
Jennifer and Peter Goldman
Mrs. Stephanie Goldman-Rosen
and Mr. Steven Rosen
Estate of Irving Greenberg
Mr. and Mrs. Richard J. Grich
Kirk and Jen Gutekunst*
Estate of Violet Haelterman
Anita Handel Charitable
Remainder Trust
George and Pam Hollodick
Wayne Johns
The Edward D. Jones & Company
Foundation
Kay Family Foundation, Inc.
The Landeck Family
Estate of Marilyn E. Lapps
Michael and Carolyn Levine
Estate of Doris E. Marsh
Estate of Martha Suzanne Maxwell
The Alexander and Marianna
McAfee Fund
McKay Family Charity Fund
Estate of Helen McNutt
Estate of S. Warren Metcalf, Jr.
Charlotte and Jim Monhart*
Mr. and Mrs. James E. Morgan, III
Estate of Jane Ellen Mumma
Northwestern Medicine
Tamra and Dan Novak
Arthur J. Ohlsson Charitable Trust

Estate of Reva Ostrow
Patient Access Network Foundation
PennyMac Giving Fund
Bill and Marlene Perdan
Estate of Wilma H. Peterson
Estate of Terry E. Rogers
Rush University Medical Center
Edmond J. Safra Philanthropic
Foundation
David Charles Sankey
Carl S. Schneider
Fred and Nancy Schumacher
Estate of Winslow T. Shearman
Thomas H. Stutzman
Judy Taub Gold
Susan Wasserstein and
George Sard
Michael and Julie Waterstone*
David and Pamela Waud
Dr. Karen Weiss-Fisher
and Jeff Fisher*
Anne Wojcicki Foundation
Emily W. Wsocki
Sherwin and Sheri Zuckerman

\$10,000-\$24,999

Jena E. Abernathy
ACB Family Fund
Kathy Albert
Mr. and Mrs. Thomas S. Alexander
Allegiant Travel
Allianz Life Insurance Company
of North America
Arani Family Fund
The Atmos Foundation

Mona and Andy Albert
The Applebaum Foundation
Anonymous (8)
Mr. and Mrs. J. Gordon Beckham, Jr.
Tom and Marcia Mondavi Borger Family
Josephine Chu
Mrs. Lourdes Dosal
The Dunn Family
Richard and Schuyler Field
Fairchild Martindale Foundation
Amy Goldman Fowler
Richard and Shelley Friedland
Mr. and Mrs. William F. Griffin, Jr.
Judy and Ponder Harrison
Cindy and Scott Heider
Sharron and Joseph Ashby Hubert Fund of
the Community Foundation of Broward
Bannus and Cecily Hudson
Mr. and Mrs. Richard J. Kastner
Michael and Ann Kay
The Korn Family
Neilia LaValle

DONOR PROFILE

Fields Family's Generous Donation Helps Parkinson's Researchers



Shortly after Barbara Fields was diagnosed with Parkinson's, together with her husband, Bryan, and their children, they sought to find an organization committed to research and improving treatments for people with Parkinson's. The family feels fortunate that Barbara receives expert care from skilled movement disorders specialists, but they want to help the Foundation continue providing support and resources for those who do not have access to Parkinson's care. "Initially, we just wanted to see a cure," Bryan said. "As the years pass, we have become more aligned with helping people who have Parkinson's live their best life, and the Parkinson's Foundation programs committed to that resonated with us."

The Fields family finds hope in supporting research that will one day lead to a cure. Last year, they worked with Parkinson's Foundation Chief Scientific Officer James Beck, PhD, to help ensure we keep the brightest researchers in the Parkinson's field through funding. "We wanted to support a researcher who is working toward a cure and also helping to enhance the quality of care for people with Parkinson's today."



Expanding our Reach through Parkinson's Programs in Rural Areas

Parkinson's Foundation community grantee, Journey through Parkinson's Disease (JTPD), is a three-part Parkinson's educational series led by Dr. Elizabeth Stegemoller, PhD, in collaboration with Iowa State University Extension and Outreach. The program educates people with PD in rural areas about Parkinson's, how to find medical care and alternative therapies. Dr. Stegemoller also hosts an annual PD Singing Festival that brings people with PD from all over the world to sing together.

Bee Payne-Stewart Foundation
 Ronald Bellavich
 Steven Beyer
 Blue Cross and Blue Shield of Kansas City
 Blue Grass Energy Cooperative Corporation
 Benjamin and Sue Boley
 Bonner Family Private Foundation, Inc.
 Dr. and Mrs. Robert A. Brooks
 Wayne and Neva Bryant
 Cannstatter Foundation
 Estate of Rodney F. Caramella
 Amelia Charamba
 Circolo
 The Ben and Ann Clayton Charitable Foundation
 Louis & Virginia Clemente Foundation, Inc.
 Glen Clemmons
 John P. Clulow Fund
 Cole-Crone Family Foundation
 Betty A. Copeland
 Robert and Joanne Crown Income Charitable Fund
 Daluge Family Fund
 Julie M. Danstrom
 David Peyser Sportswear, Inc.
 Ryan Davis Family Fund
 Mr. and Mrs. Mark Debofsky*
 Estate of Victor Delano
 Diamantine Family Foundation, Inc.
 Mr. and Mrs. Mark X. DiSanto
 Doyne-Oury-Rosenfeld Family Philanthropic Fund
 The Michael J. Drabb, III Giving Fund
 Drive Toward A Cure
 Estate of Harold Dunlap

David G. Ebert
 The Echlin Foundation
 Missy Egbert Sheehan and William Sheehan
 EPIC Brokers & Consultants
 Frederick V. Ernst
 Ernst & Young
 Fertig Chartable Fund
 Ruth Fingerson
 Nancy and Hank Fisher Senior Initiative Fund
 Florman Family Foundation, Inc.
 Joe Foy, Jr.
 Estate of Sally J. Frampton
 Fuente Family Foundation, Inc.
 F. Daniel and Bunny Gabel
 The Robert and Cheryl Gilhooley Charitable Fund
 Sandra Gluck
 Lindsay Golden*
 John A. and Marilyn K. Gordon Foundation
 Guy Gravel
 The Gray Family Foundation
 Kelly P. Hagemeyer
 Muriel Harris
 Judy and Ponder Harrison
 Robert J. Hartlaub, Jr. and Ann Ivancic
 Edward and Ellinor Hayward
 George and Candace Hisert
 Hobson Family Charitable Fund
 Kenneth A. Hoffman
 Honey Family Charitable Fund
 Estate of Gerda W. Hoover
 Michael Inden Living Trust
 Christina and D'Qwell Jackson
 The JANA Foundation, Inc.
 Tim Johnson

The C and A Johnson Family Foundation
 The Glen and Doris Johnson Fund
 Joseph Rosen Foundation, Inc.
 Steve and Samia Joyce Charitable Fund
 Diane and Michael Kern
 Tana S. Kirkpatrick
 Michael Kolodny
 Dale Larson
 Arlene and Jerome Levine
 The Irwin Levine Charitable Fund
 Edwin and Carolyn Levy Charitable Foundation, Inc.
 Bertha and Isaac Liberman Foundation
 Lift Works, Inc.
 Linda L. Linder-Gelo
 Jerry M. Lindzon
 Melanie Lomaglio
 Estate of Saul H. Lowe
 Richard Lukaj
 Frank T. Macinnis
 Michael and Deborah Maguigan
 Linda Lee Maines Living Trust
 Kim Malick
 The Maslow Family Foundation, Inc.
 David M. Mattenson
 Joan D. May
 Mayman Family Charitable Fund
 Marian S. McAuslan & Frederic T. McAuslan Endowment Fund
 McBride Foundation
 Monica McCormick
 John L. and Helen B. McGrath Fund
 Jesse T. McMahan
 Joyce C. Melvin
 Judith and Robert Melzer
 Craig and Stephanie Miyamoto
 Montpelier Farming Corporation
 Estate of Wiley J. and Nancy C. Morgan
 Morley
 Willard Morris
 Estate of Peggy Morrow
 Robert and Diane Moss
 Mount Sinai Hospital
 Ernest George Mueller and Frances Joy Mueller Foundation
 The Murphy Family Foundation
 The Polly G. Nicely Fund
 Franklin Nieman
 Mr. and Mrs. Ira Nolt
 Estate of Sylvia Novick
 Ohio State University Wexner Medical Center
 OhioHealth
 Joseph and Roberta Owens
 Marguerite Pelissier

Pickaway County Community Foundation
 Pickron Family Fund
 Elaine Platt
 Virginia C. Pomper
 Serge E. Przedborski
 Pura Vida Bracelets
 Quantum Foundation, Inc.
 Reed Family Foundation
 Rigas Charitable Remainder Unitrust
 Fred and Maxine Rumack
 Estate of Patrick J. Ryan
 Saad Healthcare
 The Sain Orr Royak DeForest Steadman Foundation
 Estate of Robert Sanders
 Bill and Nathalie Schmicker
 Larry and Sheila Schneiderman
 Patricia Schreier
 Martin and Melrose Schwartz
 Steve and Carole Scott
 Cathy Sergo
 Dr. Margaret Siber
 Philip and Karen Sirianni
 Andrew Slepoy
 Louise Springer
 Jeff Stedman
 James Paul Sutton Medical Research Fund
 Syde Hurdus Foundation, Inc.
 Mary Jane Tancinco
 Estate of Jerald Stillwell
 Thompson
 Total HealthWorks of The Columbus Foundation
 Truettner Family Foundation
 UCB BioPharma
 UCB, Inc.
 University of Tennessee Medical Center
 Daphne D. Vaughan
 The Veale Foundation
 Estate of Mary Vendittelli
 Walmart Foundation
 Arthur L. Walters
 William and Kathryn Wandmacher Charitable Gift Fund
 Mr. and Mrs. Glenn D. Warren
 Steven D. Watts
 Susan Weistrop
 Jenny Williams
 John B. Williford
 Daniel Wolf
 Adam and Kim Wolfberg
 The Wrobel Family Foundation
 Robert and Maureen Yeo
 Yonkers Contracting Company, Inc.
 The Zoota Family
 Eleanor and Leo Zucker Family Foundation

\$2,500-\$9,999

2020 Search Partners, LLC.
 Aaliyah Memorial Fund, Inc.
 Marvin Aardema
 The Accelerate the Future Fund
 Mr. and Mrs. David J. Adams
 Agape Foundation
 Ahmed M. and Fawzia A. El-Mahdawy Foundation, Inc.
 Stephen Aldrich
 Rita Alexander Irrevocable Living Trust
 Bibi Ali
 Susan K. Allen
 AlphaOne Ambulance Medical Services, Inc.
 Norman A. Alston
 Mary Jane Altmiller
 The Ame Foundation, Inc.
 AMG Charitable Foundation
 Mary Z. Ancell
 Anderson & Wells PC
 Cary Andras
 Russellene Angel
 Anne Arundel Senior Services Provider Group
 Tony Argiz
 Daniel M. Armstrong
 Terry and Regina Armstrong Family Charitable Foundation
 Eric Aroesty
 Renee Arturo
 Aspire Products, LLC
 Associated Wholesale Grocers, Inc.
 Estate of Robert A. Atterton
 Dr. Constance W. Atwell
 Estate of Mitsuko Auito
 Ronald E. Austin
 Grant Averett
 AvidXchange, Inc.
 Isabel L. Bader
 Kathleen Bahr
 Bhasker Baman
 Avi-Shah Bapat Family Fund
 Barracuda Networks
 Barbara Barrie
 Eric Bartlett
 The Baton Rouge Clinic
 Diann Baumann
 BayCare Health System
 Baylor Scott & White Institute for Rehabilitation
 Janet Bean
 Robert H. Beasley, Jr.
 Beaufort Memorial Hospital
 Janis Beaver
 The Becker-LaVacca Family Foundation
 Bellini Foundation
 Bellucci DePaoli Family Foundation

Richard Bengé
 Benton House Tiffany Springs
 Joan Bergman
 Mr. and Mrs. Jeff Berkowitz
 Joshua Berkowitz
 Alissa Berman
 Deborah Berman and Bruce Greenberg
 Edward and June Bernstein Foundation
 Petra Beucher
 The Beverly Foundation
 Arthur W. Bine
 Margaret A. Block
 Norma Bloebaum
 Mr. and Mrs. Herschel M. Bloom
 Simon & Eleanor Bloom Donor Advised Fund
 BlueCross BlueShield of Tennessee Community Trust
 Duane & Dorothy Bluemke Foundation
 Chris Bogiages
 Boley Invitational
 Paul and Gloria Boorujy Foundation Inc.
 The Boucher Charitable Foundation
 BOVITZ, Inc.
 Ann Boylan
 David E. Boyle
 Francine G. Brady
 Wes Braun
 Leslee C. Breene
 Brick & Kyle Associates, Inc.
 Bright Funds Foundation
 Estate of Twila Ann Brindley
 Bill Brizendine
 Broening Oberg Woods & Wilson, P.C.
 Tonya and Barry Brown Charitable Fund
 Terry L. Brubaker
 Gary J. Brumberg
 Buccaneer Fund
 Marshall and Gail Burack
 Andrew Burgin Charitable Trust
 David H. Burke
 Burnsville Lion's Club
 Renee R. Burrows
 David A. Burton
 Jerry H. Campbell
 Robert Campbell
 Mr. and Mrs. Michael Cander
 Robert A. Cantor
 Robert and Mary Capaldi
 Ellen Caputo
 Nicole Cartellieri
 Michael B. Cavanaugh
 Tom Chadwell
 Craig and Tammi Chalfie Family

DONOR PROFILE

The Gilbert Family Moves Together in Memory of Anne



After battling Parkinson's as a family for 10 years, Anne Joyce's grandchildren started the Anne Joyce Memorial Foundation to raise money for Parkinson's programming and research. In 2011, the family found Moving Day Washington D.C. "We do it in memory of my mom," Beth said. "It's nice that every year there is a day that is focused on her. It's an important day to recognize all the people with Parkinson's, connect with other families, hear their stories and learn about what the Foundation is doing. It's a real highlight for us."

Beth and her family are committed to supporting the Parkinson's Foundation because they believe in the power of its educational and exercise programming, along with its resources for caregivers. "My mom fought this disease and was lucky to have my dad, who was a wonderful caregiver," Beth said. "The Foundation's focus on caregiver support is very important to us because we know how hard it is to care for someone 24/7."

Thomas F. Chapman and Karen H. Chapman Family Fund
 Joel D. Chernikoff
 Al and Susan Choffnes
 Elizabeth Chu
 I J Chu
 Mary R. Clarbour
 Dr. Armin Clark
 Charles Lee Clarke Charitable Fund
 ClearPoint Neuro, Inc.
 Judy M. Cleeton
 Clinical Care Medical Center
 CND Life Sciences
 The Betsy & Alan Cohn Foundation, Inc.
 Danna Cole
 Maureen and George Collins
 Ms. Susan Colstrup
 Erin and Stuart Conrad
 Cook Charitable Account
 John Cooper
 The Country Chapel Outreach Program
 Crary Family Legacy Fund
 Anthony Criso
 Richard and Diane Cristina
 Kathryn H. Cullen

Curbell Plastics, Inc.
 Edna Williams Curl & Myron R. Curl Endowment for Parkinson's Disease of Cumberland Community Foundation, Inc.
 Betty Curry
 Cushman & Wakefield, Inc.
 Marianne Dalessandro
 The Dana Foundation
 Estate of Dorothy Maxine Danielson
 Dartmouth Health
 Lisa D. Daus Imbler
 Stephen and Cynthia David
 Dr. Barbara N. Davis
 George Davis
 Stephen Defilippis
 Jim Dehart, Jr.
 Del Webb at Riverlights Homeowners Association
 Delta Pioneers West Coast Chapter
 Laurence W. DeMuth, Jr.
 Marie G. Dennett Foundation, Inc.
 Dent Neurologic Group, LLP
 Dr. Joseph A. Depietro
 Dignity Health Foundation

*denotes multi-year pledge donor



Making Life Better for People with Parkinson's

Kim Gamble has been helping people navigate Parkinson's as a movement disorder clinic coordinator for 20 years. She became a Parkinson's Foundation

volunteer in 2021, serves on the Parkinson's Foundation Carolinas Chapter Advisory Board and chaired our first-ever educational symposium for the African American community in February 2022. The program's success inspired similar events across the country. In September 2022, we presented Kim with the Rising Star Volunteer Award alongside her family in Charlotte, NC. "Winning this award was made possible because of the hundreds of people with Parkinson's and families that allowed me to be a part of their journey," Kim said.

Discovery Senior Living
Martha Dohm
Dr. Daniel Dolk
Don Carlos Giving Fund
Diane S. Dondershine
Kent and Carol Donley
Mike Dougherty
Mr. and Mrs. Paul Downing
Jerome B. Drayman
Jerome Drayman
Jeanne Driscoll
Dubner Family Foundation, Inc.
Bernard and Nancy Dunkel
The John and Marilyn Dutton Charitable Giving Fund
The Eckard Family Charitable Fund
William Edwards
G. Pennington Egbert, III
Dr. and Mrs. Steven B. Eiden
Eighth Ward Beneficial Association
Mr. and Mrs. Robert Elfont
Lynne Ellison
Encompass Health
Brian Endres
Stuart and Judith Epstein
Judith Erdberg
The Erickson Family Charitable Fund
Emilio Escandon
Escape Bio
Suzanne Etheridge
Ettinger Family Charitable Fund
Dr. Robert and Janet Ettleman
Christopher Eykyn
The Fahey Family Fund
Fairview Health Services
Martha N. Faith
Arthur Falcone

Paul Farahvar
Glenn Farrell
Arthur & Eve Fastenberg Philanthropic Fund
Mary Fenkel
Timothy Fenton
Renee and Burton Field
Leonard Fierstein
The Finch Family Foundation
Linda Fishman
Donald Fitzgerald
David G. Flagler Fund
Robert Flanagan
Leroy Folie
Miriam Fond
Rudolph and Hilda U. Forchheimer Foundation, Inc.
Richard Forrest
Judith A. Foster
Frankel Health and Research Foundation
Lee Friedlander
Froelich Family Foundation
Rita D. Fuchsberg
Fugitt Foundation
Fulgent Genetics
Richard A. Furniss
Galaxy Cowboy, LLC.
Manuel Garcia
Donald Garrison
Valerie Gattinella
Estate of Rose W. Gausman
GE Healthcare
Phillip and Julia Gee Charitable Fund
Richard and Cheryl Gelber
Genesee Valley Physical Therapy
Norma Geron
Robert Giannascoli

Peter M. and Margaret L. Gill Charitable Fund
Mr. and Mrs. Allan Gillan
Judith S. Gillies
David and Alexis Ginn
Lowell Glazer
Janet Glidden
Bill and Ethel Gofen
Ed Gold
Leslie F. Gold
Mr. and Mrs. Henry L. Goldberg
Lance Goldberg
Jerome and Molly Goldstein Philanthropic Fund
Mark Goodlander
Dr. Moses and Beatrice Goodman Fund
Ian Goodman
The Karen and Liran Gordon Charitable Gift Fund
Samuel L. Gordon, Jr. Giving Fund
Grace Foundation
John H. Grace Foundation
Maureen M. Graham
Estate of Virginia D. Granat
Grand Council of Cryptic Masons
John Green
William M. Green
The Greenbrier Companies
Byron and Sue Gregory
Robert Gregory
James H. Grew, Jr.
Paul & Kay Grinnell Charitable Fund
Max Gruber Foundation
Rodney Haberstroh
Judy A. Hajjar
Jean Hall
Estate of Bette Lou Harrell
Dana Harris
Wendy Harrison
Gayle M. Hatch
Ernest 'Tommy' Hayden & Harriett 'Rusty' Jean Thomas Fund
Carson Hayes
George Hebard
Tim Heine
Estate of Dolores Henze
Clayton and Margaret Hepler
Carolyn M. Herbruck
Robert J. Herman
David Herro and Jay Franke
Daniel N. Hertz
Brian Higgins
Karen Hill
The Hindawi Charitable Fund
Hobbs Family Charitable Trust
Michael Hoffman
Stephen and Margot Holland

Rose and Russell Holmes Donor Advised Funds
Judy C. Holoviak
Roy L. Holt
Home Care Assistance
Homestead Foundation, Inc.
Kimberly Horner
Court and Joanne Houseworth
Frank F. Houston
Richard and Christine Howard
Dorcas Huang
Pamela Hudgens
Bannus B. and Cecily K. Hudson
Hunter Family Foundation
William T. and Susana D. Huston Family Foundation
Mr. Mike Hymowitz and Ms. Sara Strom
Ignite Medical Resorts
Maurice & Sarah Iudicone Charitable Fund
Elise R. Jaffe
Linda Jensen
David Johnson
Elizabeth A. Johnson
Eric & Jean Johnson Family Fund
Wayne Johnson
Paula Johnstion
Jomama's Family Foundation
Anne P. Jones
Jones, Skelton & Hochuli, P.L.C.
Benjamin and Jean Kahn Charitable Remainder Unitrust
Kaiser Permanente
Daniel & Susan Kane Donor Advised Fund
Jeremy Karnowski
Cindy and Leonard Karr
Nimish Katwala
The Rachel & Drew Katz Foundation, Inc.
Trent Keenan
Kellwood Foundation
Kelly Family Foundation
Kettering Health Network
Key Investment, Inc.
Spencer Kimball
Lewis A. Kingsley Foundation
The Kinnett Family Trust
Ken Knott
Francine Kohut
John L. Kolaya
Donna Korkes
John W. Kozyak and Barbara Silverman
Sylvia Kreithen
Rae Krelitz
Krista and Gregory Kubida
Henriette Kutscher
Barbara C. Kyse
La Carota Farms, LLC.
Rich and Janet Labenz

Harkisan A. Laheri
Lam Research Foundation
Mr. and Mrs. William Lang
Terry Larkin
Richard and Cecilia Larkin
Michele Larocca
Lautman, Maska, Neill & Company
Charles D. LeCount
Debbie Lee
Legatus Foundation
John L. Lehr
William R. Leighton, Jr, M.D.
Hanne Leloup
Cassandra J. Lems
Estate of Francis J. Lencioni
Leonard's Express, Inc.
Janet W. Leopold
Marian K. Lepp
Bernard Lesser
Dina L. Levin
Paul Levis
Allison Lewis
Anna M. Lewis
Carol A. Lewis
Stephen E. Lewis
Kevin Li and Lori Sugarman
Dr. and Mrs. Julian Lifschiz
Charles Ligeti Revocable Trust
David Lingo
Joseph and Julie Liss
Litterman Family Foundation
Carl and Shelly Little
Wendy Little
LIVE Casino & Hotel MD
Mr. and Mrs. Arnold Loeb
Edward D. Long
James L. Long
Jane P. Long Fund
Lovelace UNM Rehab Hospital, LLC.
Lowenstein Hanan Charitable Fund
Chad Lubben
Violet Lui-Frank
Luke Charitable Foundation
Luo Ruvo Center for Brain Health
Daniel P. Lyons
Stephen and Julie Maas Foundation
Justin Mackay
The Mahoney Donor Fund
Theodore Maidenberg
Larry and Janis Malone
Ann S. and Albert L. Maltz Foundation
Daniel Mandel
Nancy and Alan Manocherian
Maritz Global Events
Mark Nestle Family Fund
David Mark
Linda Markeloff

Estate of Margaret Marshall
Maser, Amundson & Boggio, P.A.
Irene M. Matto Trust
William and Dorothea Mayer
Brian McAuley
Marciana and Mike McCabe
Janet McCarthy
McCrite Plaza
James L. McDonald
Linda McDonald
Ruth D. McDonel
Rosemarie McGiffin
Raymond McKay, Jr.
McLaughlin Family Charitable Gift Fund
Emily McNaughton
Ashley McNeil Coleman
Medical University of South Carolina
Aaron Medvick
The Meehan Modica Family Fund
Richard Meehan
Annie Mensak
Robert B. Menschel
Violet Merrill Charitable Trust
Louis Messer & Helen Messer Charitable Foundation
Steve and Adrienne Messing
Gail Metts
Doris C. Metzler Revocable Living Trust
John Meyers
Ruth Meyerson
Middle Tennessee Electric SharingChange, Inc
Midwest Enterprises - L.J.M., Inc.
Linda Milbradt
Dr. David Miller
Melvin Miller
Linda and Allen Miller Fund
Donald Miller and Marie Head
Jeff Mitchell
MKF Revocable Living Trust
The Mocknick Family Fund
The Monello Family Foundation Fund
PM - The Monteiro Family Charitable Fund
Moran Family Foundation
James and Laura Morgan
Movement Revolution
Mary M. Moyce
John and Nancy Munch Charitable Fund
My Choice Wisconsin, Inc.
Nam Knights of America MC - Hudson Valley Chapter, Inc.
Naples Charity Clays, Inc. - Anthony Dwyer
Michael Naumann
Ambika Nayar, M.D.
Tyler Nelson

DONOR PROFILE



Rick and Susan Kastner Support Care for Today, Research for Tomorrow

When Rick Kastner's father was diagnosed with Parkinson's, he searched for support resources for people with PD and their care partners, which led him to the Parkinson's Foundation. Now, he and his wife, Susan, are also members of Leaders in Research and support PD GENERation: Mapping the Future of Parkinson's Disease. "The Foundation is a terrific resource for people impacted by Parkinson's and their families," Rick said. "I've always advocated for making life better today for people with Parkinson's and their care partners, but the Foundation's PD GENERation research is critical, and can make a real difference."

Rick hopes their generous support also helps spread awareness about PD. "Parkinson's is often a misunderstood disease and I think it needs advocates," he said. "Through educational programs and connecting people, the Foundation is helping make life better for people living with Parkinson's today. The research is also encouraging. Soon, we might have better treatments, and hopefully someday, a cure."

Bruce A. Nemer
Linda L. Nestle
Neuraly Med
NeuroDerm
Neurology Consultants of Dallas, P.A.
New Albany Ace Hardware
Debra & Scott Newman Family Foundation
Robert Niemann
Robert Nobile
Richard S. Nopar
John H. Ogden
Edward Oliphant
Sharon Olson
The Palisades Educational Foundation, Inc.
Parikh Parivar Foundation, Inc.
Parker Hannifin Corporation
The Lorne Ilona Parker Foundation
Richard Paronto
Chris Patrick
Lucie Patton
The Alden Philip Pearlstein Family Foundation
Pella Corporation
Pellittiere & Johnsons PLLC
Estate of DeWitt Peterkin, III

Petty Family Gifting Fund
Phil Hughes Honda
Myra and Daryl Phillips
PhRMA
Estate of Anne E. Plaskett
Plaskett Kordisch Charitable Gift Fund
Mr. Robert J. Pliska
Judy Polomsky
Neil M. Pompian
Pope, McGlamry, Kilpatrick, Morrison & Norwood, PC
Andrea Porter
Joanne H. Pratt
Patricia Pratt
John Preabt
Premier Health
Fayga and Elliot Press Advised Fund
Denise Pride
Polly E. Pyeatt
Barbara J. Pyse
Jim Quirk
Georgette M. Rachal
Richard D. Raines
Raleigh Neurology Associates, PA

*denotes multi-year pledge donor

Therapeutic Singing for Parkinson's Builds Community and Reduces Anxiety

Parkinson's Foundation community grantee Singercise

- Therapeutic Singing for Parkinson's at Greater Susquehanna Valley YMCA in Sunbury, PA, is designed to improve vocal intensity, speech intelligibility, respiration and swallowing for people with Parkinson's. The group class builds community and reduces symptoms of anxiety and depression for all participants.

Amy and Lance Rantala
John Raphael
Joseph Rasmussen
Rays Baseball Foundation, Inc.
Phyllis Rearden
Sue and Buddy Redd
Rehab Without Walls
Ronald G. Remus
Seth Resnik
Richardson Family Donor Fund
The Rider Financial Group
Jennifer J. Rippy
Susan V. Ritter
Melyza Rivera
John Roberts
Mr. and Mrs. Darrell E. Roberts
Marc B. Robertshaw
Tracy Robinson
Rock Steady Boxing Northeast PA
Rocker Family Foundation
Debra Rohr
Mr. and Mrs. Mark Roos
Roper St. Francis Healthcare
Fred Roses and Deidre Brown
Charitable Fund
The Irene Herbert Ross & Harper
Grant Ross Foundation
Pamela Rothenberg
Jay Rothlein
Jackie E. Roush
Mr. and Mrs. Arthur and
Linda E. Rowe
Dr. and Mrs. David Ruedrich
Diane L. Rusch
S & S Trust
Thomas L. Safran
Saint Barnabas Medical Center

Saint Luke's Health System
Kansas City
Edward A. Sair
Salsbury Family Parkinson's
and Movement Disorders
Program at Hoag
Ruth M. Samuels
Neal and Sherrie Family
Foundation
Julianne Scarks
Jennie Scarnici
Schaefer Family Foundation
Scharf Foundation, Inc.
W. S. Scharff Family Foundation
John Schaus
Elizabeth Schenk Charitable
Fund
Schiraldi Family Giving Fund
William H. Schlackman
David Schmitt
Daniel M. Schneider
Schoenstadt Family Foundation
Leonard Schuchman
Ira Schulman
Dr. and Mrs. Edward
Schwartzberg
Thomas L. Scobey
Second Generation Charitable
Fund
Stacy Seiden
Karen Shaer
Shakopee Bowl, LLC.
Dr. Vilasini Shanbhag
John Shapiro
Robert Sheltz
Estate of Melvin Shiramizu
Shirley Ryan Ability Lab
Sibley Family Foundation
Singer Family Fund

DONOR PROFILE

Rollin M. Gerstacker Foundation Helps Drive Our Mission



The Rollin M. Gerstacker Foundation's generous \$300,000 multi-year grant helps ensure the sustainability of the Parkinson's Foundation. In 1957, Mrs. Eda U. Gerstacker established the Rollin M. Gerstacker Foundation in memory of her late husband to support projects that have a strong, positive impact on communities. "We recognize the critical importance of general operating support grants so that non-profits can continue to operate in a fashion that serves the community to which they dedicate their efforts," said Lisa Gerstacker, President of the Rollin M. Gerstacker Foundation. "We are happy to support the core mission of the Parkinson's Foundation to help improve the lives of people with Parkinson's disease."

Robert and Melissa Smith
Annette and Paul Smith
Kathie R. Smith
Patricia A. Smith
Dewayne Smoak
William Snowden
Solomon Family Foundation
Lena Sorrentino
Karen Sorrick
Sosa Charitable Gift Fund
South Atlantic Bank
Southeast Primary Care
Partners, LLC

Robert E. Spaddacia
Stephanie Spanier
Todd Spanier
Albert Spielman
Estate of Michael Spring
Springer Rampal Family
Giving Fund
Joanne and Cyrus W. Spurlino
Fred and Mary Stahmann
Family Fund
Star One Credit Union
Mark S. Stephenoff
Brian Stewart

Charles Stone
Barbara L. Strack Charitable Trust
Thomas Stringer
Barbara Stuessy Charitable Trust
Eric Stumberg
David Sturgeon
Sugar Family Fund
Summa Properties
Sunrise Sun, Inc.
John and Jill Svoboda Donor
Advised Fund
Donald Swanson
Velia S. Sweet
Les and Darlene Swenson
Family Fund
The Tarantino Law Firm
Henry & Marilyn Taub Foundation
Robert Tecklenburg
The Allyn Foundation, Inc.
Linda Thomas
Thomas and Patricia Thomas
Thomas F. Tipi Revocable
Living Trust
Tom H. Tobin
Tom Bartow Coach, LLC
Annie Tomei
Total Care Therapy, LLC

Nicole Townsend
The Carol A. Trani Charitable
Gift Fund
Estate of Emily A. Trees
Trilogy Health Services, LLC
The Trousdale
Trulieve, Inc.
Tucker Charitable Fund
Sue W. Turner
Marty and Amanda Tyrone
UC Davis Health
University of Nevada Reno -
Department of Pharmacology
Vancouver Canucks
The Vardy Family Fund
The Foundation of Ventura
County Credit Union
Alexanderina Vigh
Joseph W. Violi
Gregory Vogt
The VSCP Foundation
Bruce Wagner
Herbert Wagner
Walgreens
Walker and Tritt Family
Foundation
Robert A. Waller Foundation

Camele S. Wanat
Lihjen Wang
John H. Watson
Wawa, Inc.
Dennis Weeter and Sidney
Weeter Charitable Fund
Charlotte A. Wehner
J. Weinstein Foundation
Gary and Joyce Wenglowksi
The Joyce and Gary Wenglowksi
Foundation
White Companies Charitable Trust
A. L. Williams, Jr. Family
Foundation
Williamson Revocable Living Trust
Anthony L. Wilner
Wanda Wilt
Bill and Deb Winslow
James M. Witte
John A. Witte, Jr.
The Jeffrey and Lynette Woda
Family Fund
Karen and Art Wollum
The Carol & Arnold Wolowitz
Foundation, Inc.
Dixie Wood
The Woodard Family Foundation

Dr. Fred and Mary Woodlief
Phyllis I. Wormwood Fund, a fund
of the Community Foundation
for the Fox Valley Region
Robert Worthey
My Memory Worx Fund
Simon Wright
The Wuliger Foundation
Edwin and Jean York
Thomas York
Linda S. Young
Roger Young
Sharlene Young
Mark Zames
Deborah and Richard Zawalich
Charitable Fund
Mary and George Herbert
Zimmerman Foundation
Raymond Zimmerman
Gene and Mary Ann Zink
The David Zinn/Ellen Harris Fund
Charles Zody

**denotes multi-year pledge donor*

National Corporate Sponsors

The Parkinson's Foundation gratefully acknowledges those national corporate sponsors who actively support our mission-critical programs and research initiatives.

Biogen, Inc.
CVS Health Foundation
Sanofi-Aventis Recherche & Development

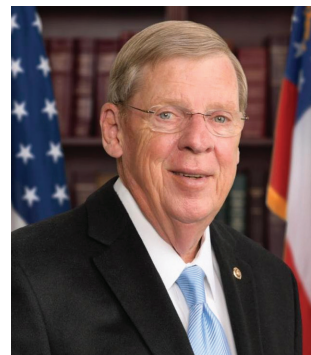
Abbott Laboratories
Acadia Pharmaceuticals, Inc.
Avion Pharmaceuticals
Amneal Specialty Pharmaceuticals
Genentech Inc. Member of the Roche Group
Kyowa Kirin
Neurocrine Biosciences, Inc.
Sunovion Pharmaceuticals, Inc.
Supernus



In Memoriam of Bernard J. Fogel, MD

We honor the legacy of emeritus board member, Bernard "Bernie" J. Fogel, MD. He served as a board member since 2007 and as chairman

from 2008-2013 to our legacy organization, where under his leadership, we launched a research study to improve the quality of care for people with Parkinson's, as well as our nationwide signature event, Moving Day, A Walk for Parkinson's. Dr. Fogel will be missed and will always have a place in the legacy of the Parkinson's Foundation.



In Memoriam of Senator Johnny Isakson

We remember Former Senator Johnny Isakson (GA), Parkinson's Foundation emeritus board member, and are grateful for his commitment to advocacy

efforts to make life better for people with Parkinson's and their families. Senator Isakson joined our board in 2020. His positive outlook and proactive approach to further Parkinson's research will forever inspire us.



Moving Day, A Walk for Parkinson's

brings communities together to fight Parkinson's disease. In 2022, we brought back in-person events to celebrate movement — proven to help manage Parkinson's symptoms — in 50 cities across the U.S.



After three specialists, Kathleen Gleiter was finally diagnosed with Parkinson's at 54. "I was up and down, but mostly down. I knew I had to find a community of support to feel less alone, so I did," she said. Two years later, she found Moving Day. "I needed to get involved and do something within the PD community, so I signed up for Moving Day, and raised more than \$6,000. Now I'm on the planning committee with my son. No one wants to have Parkinson's, but I want to do what I can while I can and then say that I did."



\$39.8M
Raised since 2011



304
Moving Day Events



173,100
Participants



25
States

Top 10 Moving Day Teams

Amount Raised in 2022

- \$39,110** Sherwin Zuckerman *Chicago*
- \$32,597** Christine Howard *Twin Cities*
- \$31,702** Susan Brown *Atlanta*
- \$26,148** Sarah Brown *Atlanta*
- \$25,549** Vikas Chinnan *San Jose/Silicon Valley*
- \$22,487** Gordon Beckham *Atlanta*
- \$20,874** Brian Stewart *Kansas City*
- \$20,300** Andrew Albert *Chicago*
- \$16,681** John Kolaya *New Jersey*
- \$16,300** Carey Durham *DFW*

REACH FURTHER

One Year Update

Our Reach Further campaign is on track to reach its goal of raising \$30 million to accelerate Parkinson's research, improve care and fund more quality-of-life programs.

In 2022, Reach Further finished its first year strong, achieving 25% of goal with support from more than 3,600 donors. Each Reach Further donation benefits Foundation initiatives aimed at advancing research, expanding access to care for all people with Parkinson's and funding more community programs. The Reach Further campaign has helped us reach more people with Parkinson's across our local chapter network.

In the next three years, Reach Further funds will support the expansion of the PD GENERation initiative — ensuring we can provide genetic testing and counseling to 15,000 people with Parkinson's — and support drug discovery and development through our investment in the Parkinson's Virtual Biotech. Reach Further will also allow us to expand access to care through designating new medical centers as leaders in Parkinson's care and provide essential funding to more community exercise and educational programs.

\$7.5M

Raised in 2022

3,600

Donors

25%

Completed of \$30M goal

Move with us!
Register for a Moving Day 2023 event at MovingDayWalk.org.



Moving Day Columbus



Moving Day San Antonio

Move with your community at Moving Day, A Walk for Parkinson's in 2023. Every dollar raised supports the Parkinson's Foundation mission to make life better for people with Parkinson's.

Help make life better for people with Parkinson's today and in the future. Visit Parkinson.org/Reach.



Parkinson's Revolution is an indoor cycling fundraiser that combines passion, determination and community to advance our mission toward a cure. In 2021, Parkinson's Revolution took place in 30 cities and raised more than \$505,000. We thank all riders and recognize the top 10 riders from our 2022 events. Since 2020, 2,750 Revolution riders have clipped in, geared up, and raised more than \$1 million!

Top 10 Parkinson's Revolution Riders		
Vikas Chinnan	Parkinson's Revolution San Francisco	\$ 26,001
Cory Pinegar	Parkinson's Revolution Salt Lake City	\$ 10,000
Melanie Hannon	Parkinson's Revolution Chicago	\$ 9,364
Scott Balke	Parkinson's Revolution Twin Cities	\$ 8,782
Susan Cohen	Parkinson's Revolution New York City	\$ 7,095
Deborah Lucchesi	Parkinson's Revolution San Francisco	\$ 6,534
Arthur Izzo	Parkinson's Revolution USA	\$ 6,189
Kevin Donnellon	Parkinson's Revolution Chicago	\$ 4,755
Amanda Meyers	Parkinson's Revolution Buffalo	\$ 4,374
Gregory Foster	Parkinson's Revolution Kansas City	\$ 4,122

Amanda Hosts Revolution to Raise Awareness, Honor her Dad



When Amanda Meyers' dad, Bob Moses, was diagnosed with Parkinson's in 2020, she wanted to help but wasn't sure where to start. She found her way to Parkinson's Revolution, the Parkinson's Foundation indoor cycling fundraising program, and noticed there wasn't an event in Buffalo,

NY. As the co-owner of Revolution Buffalo, a cycling studio, signing up to host was a natural first step.

In just two years, Amanda has raised more than \$40,000 in honor of her dad. "Parkinson's Revolution is a great way for people to feel like they are helping," she said. "When my dad was first diagnosed, the unknown was the biggest struggle. That's why we worked so hard to make this a big fundraiser. This is a simple, fun thing for people to join, but it means so much more to those directly affected by this disease."

Amanda is excited to host Revolution in 2023 and raise more for PD research and programs. "It makes the event so much more powerful to know that there are people with Parkinson's and their families riding with us," she said.

Learn more at Parkinson.org/Revolution.



Our Parkinson's Champions are energized to help us beat Parkinson's. Champions have raised more than \$18 million to make life better for people with Parkinson's. We thank all Parkinson's Champions and recognize our top 10 fundraisers who raised funds between July 1, 2021 and June 30, 2022.

3,100 miles run

160 Gallons of chili cooked

795 Participants in the Jog60 April Challenge

74 Hours of Twitch Streaming



As a junior in high school, Kaden's T-shirt fundraiser raised \$29,000 in honor of his uncle "Unky" Andrew, who was diagnosed with Young-Onset Parkinson's in 2021.



Teresa was diagnosed with Parkinson's in 2019 and decided to challenge herself to ride 300 miles across her state of Virginia to raise \$21,401 and awareness.

Top 10 Parkinson's Champions: Endurance Race		
James Harrison	2021 New York City Marathon	\$ 42,150
Kaden Lewis	T-Shirts for Unky	\$ 29,523
Wendy Harrison	2021 New York City Marathon	\$ 26,155
Taylor Gattinella	2021 New York City Marathon	\$ 25,090
Saul Qersdyn	2021 Philadelphia Half Marathon	\$ 22,670
Teresa Jackson	Bike Across VA	\$ 21,401
Ashley Wilking	2021 New York City Marathon	\$ 15,500
Joyce Tracey	Zero Mile Fun Run	\$ 12,599
Brad Loe	2021 New York City Marathon	\$ 11,911
Monica McCormick	Stream for PD 2021	\$ 11,767

Parkinson's Foundation Legacy Society

The Parkinson's Foundation recognizes and honors all Legacy Society members who support the Foundation in their wills, trusts, life income gifts, retirement plans and other planned gifts. Legacy Society members leave meaningful, lasting legacies for future generations.

- | | | | |
|---|---|--|---|
| Mr. and Mrs. Jack Abbit
E. Richard Alhadeff, Esq.
Michele and Robert Amerman
Steven R. Ames
Leo M. Amoroso
Scott Anderson
Maria Astaire
Helen C. Avchin
Jack Ayers
Christopher T. Baker
A. Jeffrey Barash, Esq.
Dorothy Beatrice
Barbara Ellen Becker
Dennis Berg
Christina Best
Connie Bierlein
Verdell Bishop
Paul R. Blom and Robert W. White
Mary Boire
Stanton G. Bonta
Satyendra Botchu
Jonathan Brand
Charles Bray
George Bryant
Marshall R. Burack, Esq.
Maida Burka
Steve Bye and Elizabeth Clark
Tom Campbell
Irene Cerda
Victor Cerda
Dr. Kalpana Chakraburty
Karen Clark
Gerard Clausen
Judy M. Cleeton
Lewis F. and Mildred E. Collier
Richard and Susan Comeau
Kathryn Confare
Jimmie Cook
Jennifer Cooke
Douglas Cooper
Elizabeth Cornell
Thomas Cornell
Deloris T. Crews
Collin Cronin
Thomas Curtis
Michael DeCou
Melissa Dehne
Nathan Dehne
Marilyn Delanoeye
Jean M. Dewdney
John Dollar | Sharon Dollar
Rick Doty
John R. Dowd
Linda Doyle
Lorraine Duewiger
David G. Ebert
Jan P. Egger
Faye Elahi
Mary Jean Elioff
Robert L. Elliott
James A. Enloe, Sr.
Danny Lee Ertman
Guy P. Estes
Elana Ferguson
Jennifer Fiello
Detra Foster
Mark Gentz
Lyndsay Geyen
Ed Gold
Diane Golden
Alan Goldstein
Molan Goldstein
James H. Grew, Jr.
Christopher Hampson
Mr. and Mrs. Charlie Harrison
Lynn Hemrick
Jennifer Hendrickson
David and Heather Hennekes
Darlene Hitch
Brian and Clara Hodgson
Allen Hofknecht
Margaret R. Horner
Andrew Huddleston
Edward Jervey
Eleanor N. Jordan
Barry Kaye
Tana S. Kirkpatrick
Barbara Kirsh
Betty Klausner
Annette H. Korn
John W. Kozyak, Esq.
Naomi Kramer
Mr. and Mrs. William H. Krechowski
Simon Lambert
Ginger M. Lawler
Helmut Leeser
Jeanie R. Lento
Lance Leviner
Claire Levy
Josef Lindner
Jeffrey Lingle | John Little
Rosanna Loach
Deborah L. Lucchesi
John and Cynthia Ludwig
Melody Lunsford
Gail M. Madson
Thomas J. and Rosemary A. Manak
Virginia McBride
Chris McCartney
Lorrel Alexander McCook, Sr.
Delia McCulloch
Susan McCullough
Colleen McDonald
James N. and Diane K. McGinnis
Jayne McGurrin-Feshold
William (Bill) H. McMullen
Stephen McVeigh
Barbara A. Miller
Diane M. Molter
Shannon Moore
Steven Moore
Karen A. Moschetto
Melodie A. Moss
Joan A. Motovidlak
Patricia A. Mulhollen
Dever C. Myer
Gwendolyn R. Nelson
Kimrey D. Newlin
Dr. Jennifer Thuc Guyen Nguyen
Monica Nies
Mr. and Mrs. Daniel Novak, Ph.D.
Elaine Ogletree
Paul F. Oreffice
Ruth Orfield
Mary Palmer
Jan L. Parkinson
Margaret Paul
Roger Peery
William P. Perer
Kirsti Peterson
John Petraglia
Lynn Petraglia
Janet M. Petrillo
Terri A. Pittman
William M. Reilly
Deena Riemer
Anne Romanello
Pam Rosenlund
C. Jason Ross
Gretchen A. Rosswurm
Francine Rotella | Frank Rumoro
Lisa Suzanne Ryan
Monica Sain
Edward Sale
Kim Schrotenboer
Stephanie and Bernard Schwartz
Dr. Dianne A. Seltzer
Edward E. Siegel
Irving I. Silverman
Alan M. Slewett
Sheila Slewett
Angela J. Smith
Inez R. Smith
Betty Ann Sprunger
Dr. Sidney M. Stahl
Carole Steffens
Kathleen A. Steinwehr
Justina Stevens
Nancy Storm
Jean M. Sturcke
Thomas H. Stutzman
Sandra L. and Christopher L. Sundin
Roselle Taylor
Stacy Teppen
Colleen L. Thompson
Tom Tjarks
Joyce and Roger Tracy
Tom Trussler
Geraldine Tsukiji
Dr. Steven Turbiner
Luther G. Tweeten
Vivian L. Unversaw
Christina and Miguel Vargas
Jim Vincent
Marion Vurture
Stewart Ken Wach
Richard H. Wakelee
Frank A. Waser
Judith M. Webber
Ryan Thomas Weisend
Michael L. and Antoinette H. Wilkerson
Michael Williams
Julie Wilson
Lynnholly Wilson
Cynthia Wilson
Mary Ellen and Bruce Wisnicki
A.C. Woolnough
Claire and Meyer Yourman
Alan B. Zimmerman
Steve A. Zurlo
Cheryl Zweifel |
|---|---|--|---|

Irving and Anne Sherr's Legacy Supports People Fighting Parkinson's Today and Tomorrow



Irving and Anne Sherr

When Irving Sherr was diagnosed with Parkinson's, he and his wife, Anne, knew they wanted to support an organization committed to advancing research and helping people navigate life with the disease. "My mother's uncle had Parkinson's, but in the early '60s there wasn't much they could do for him," said Robert Sherr. "Then my dad was diagnosed with Parkinson's, and they found the Parkinson's Foundation."

The Sherr family is a long-time supporter of the Foundation, giving generously through the family's foundation and individually, but Irving and Anne wanted to ensure their support was enduring. When they included the Foundation in their estate plan, they became members of the Foundation's Legacy Society.

"They wanted to support people who are dealing with Parkinson's now, especially those who have limited means, and they also wanted to support ongoing research," said Robert. As Legacy Society members, the Sherr family honors Irving's memory and supports advances in research and programs that make a difference in the lives of people with Parkinson's every day.

Learn more about the Legacy Society and planned giving options at Parkinson.org/PlannedGiving.

2021-2022

Audited Financial Highlights

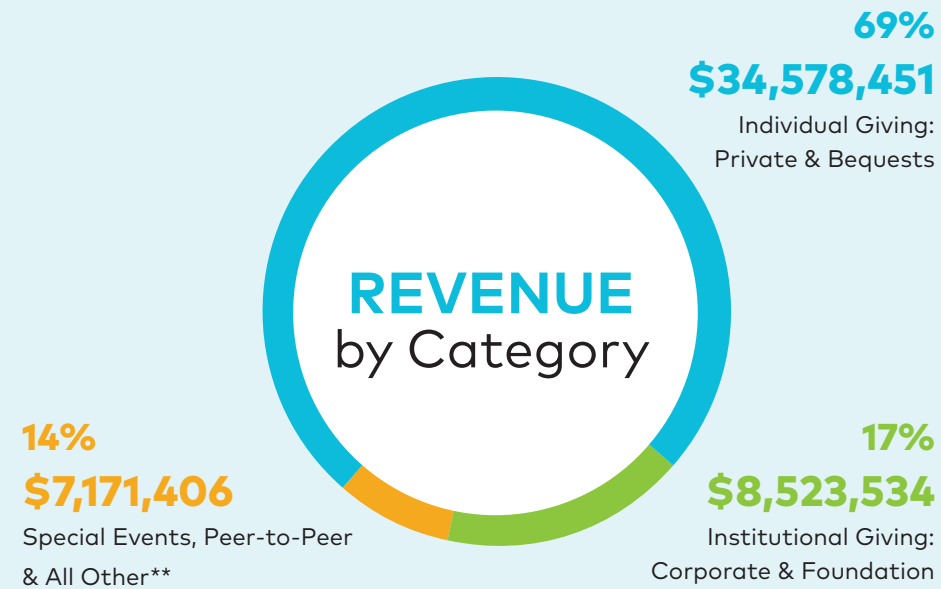
As illustrated below, the Parkinson's Foundation directed **83%** of its 2021-2022 spending on mission-related activities and **17%** on fundraising and management combined.*

Total Revenue

\$50,273,391

Total Year-End Assets

\$51,700,116



Total Operating Expenses

100% | \$43,693,490

Subtotal Mission-Related

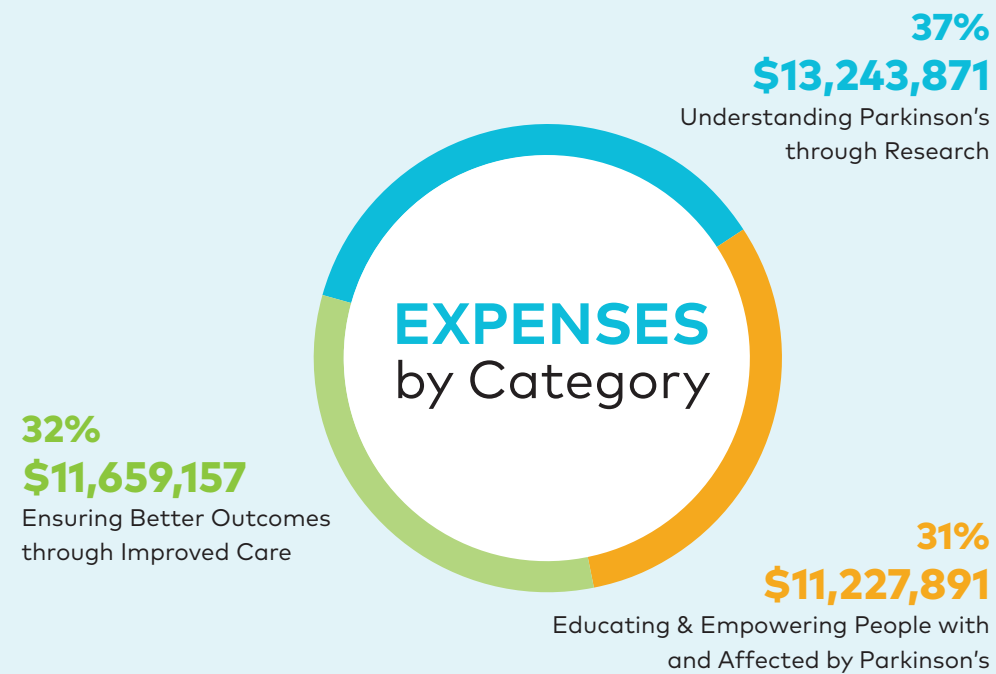
83% | \$36,130,919

Fundraising

11% | \$4,712,426

General & Administration

6% | \$2,850,145



* Reflects Parkinson's Foundation 990 for the fiscal year 2021-22.

** Includes Investment Income

BOARD OF DIRECTORS

Parkinson's Foundation Board of Directors are dedicated volunteers who guide us through their skilled leadership — invaluable setting the course towards an impact-driven mission.

DIRECTORS

J. Gordon Beckham, Jr., Chair
 Andrew B. Albert, Vice-Chair
 Jena E. Abernathy
 Stephen Ackerman
 Constance W. Atwell, PhD
 Marcia Mondavi Borger
 Sarah Brown
 Marshall R. Burack, Esq
 Alessandro Di Rocco, MD

G. Pennington ("Penn") Egbert, III
 Paolo Fresco
 Mary Ellen Garrett
 Peter Goldman
 Stephanie Goldman Rosen
 Ponder Harrison
 Alison P. Herman, Esq
 Travis Scott Howe
 Mindy McIlroy
 Janis Miyasaki, MD

William R. (Bill) Moler
 James F.T. Monhart
 Howard D. Morgan,
 Immediate Past Chair
 James (Jim) E. Morgan, III
 Paul H. Nathan
 Joshua Raskin
 John D. Thomopoulos, CPA
 Christina Weaver Jackson
 Adam J. Wolfberg

OFFICERS

John L. Lehr
President & Chief Executive Officer
 Constance W. Atwell, PhD
Secretary
 Leilani Pearl
Assistant Secretary
 Paul H. Nathan
Treasurer
 Curtis DeGreff, MBA, CPA
Assistant Treasurer

EMERITUS BOARD

E. Richard Alhadeff, Esq.*
 Daniel Arty
 A. J. Barash, Esq.
 Carmen Y. Cartaya, Esq.
 Stanley Fahn, MD
 Patricia de Stacey Harrison
 Bernard J. Fogel, MD*
 Former Senator Johnny Isakson*
 Isobel R. Konecky*
 John W. Kozyak, Esq.
 Harold P. Kravitz*
 Arlene Levine
 Edythe Kay Marsa*

Robert M. Melzer
 Gail Milhous
 Paul F. Oreffice
 Jo Ann Pepper Oreffice
 Lewis P. Rowland*
 Alan M. Slewett
 Enrique J. Sosa, PhD
 Senator Paul B. Steinberg
 Robert H. Traurig*

*Deceased

EXECUTIVE MANAGEMENT TEAM

John L. Lehr
President & Chief Executive Officer
 Meri-Margaret Deoudes, CFRE
Senior Vice President, Chief Operating Officer
 James Beck, PhD
Senior Vice President, Chief Scientific Officer

Yasnahia Cortorreal
Vice President, Chief Human Resources & Administration Officer
 Curtis DeGreff, MBA, CPA
Senior Vice President, Chief Financial Officer
 Christiana Evers, MPA
Vice President, Chief Community Engagement Officer

Kayln Henkel
Senior Vice President, Chief Development Officer
 Leilani Pearl
Senior Vice President, Chief Communications Officer
 Elizabeth Pollard, MA
Vice President, Chief Education and Training Officer

PEOPLE WITH PARKINSON'S COUNCIL

Lisa N. Cone, Chair
 Mark Kelm, Vice Chair
 Benjamin (BJ) Bement
 Vikas Chinnan
 Louise (Lou) Eisenbrandt, RN

Cynthia (Cindy) Finestone
 Paula J. Flisnik
 Phil Gee
 Gregg Hummer
 Gil Kim

Steven R. Newton, MPH
 Veera Rastogi
 Janet Reilly
 Tonia Smith
 Kelly Weinschreider

Better Lives. Together.

1.800.4PD.INFO
(1-800-473-4636)

Parkinson.org

The Parkinson's Foundation makes life better for people with Parkinson's disease by improving care and advancing research toward a cure. In everything we do, we build on the energy, experience and passion of our global Parkinson's community.



Parkinson.org



Parkinson.org/Facebook



Parkinson.org/Twitter



Parkinson.org/Instagram



200 SE 1st Street, Suite 800
Miami, FL 33131

1359 Broadway, Suite 1509
New York, NY 10018

