



NATIONAL PARKINSON FOUNDATION

ANNUAL REPORT 2006





The Mission of the National Parkinson Foundation

To find the cause of and the cure for
Parkinson disease through research.

To improve the quality of life for persons with
Parkinson disease and their caregivers.

To educate persons with Parkinson disease,
their caregivers, healthcare professionals,
and the general public about Parkinson
disease and its treatment.

National Parkinson Foundation Annual Report 2005-2006

2	Joint Message
3	History
4	Honorary Board of Governors
5	NPF Officers and Directors
6	NPF Grants
12	Scientific Advisory Board
13	Centers Review Board
14	Centers of Excellence
15	Care Centers
16	Outreach Centers
16	NPF Chapters
18	Programs and Services
22	NPF Events 2005 - 2006
24	NPF List of Donor
31	NPF Financial Report



Joint Message

The fiscal year that just ended, FY 2005-06, has been both a challenging and a rewarding year for the National Parkinson Foundation. Challenging because we have had to face, as so many other charities, the reality of declining revenues – a reality that we are confident will end this year. But rewarding because our mission-related expenditures, for the first time in our history, came ever so close to \$10 million, including over \$9 million in new grants for Parkinson-related research, care, and outreach worldwide over the next two years.

From a programmatic standpoint, we are, in many respects, at the peak of our existence as a Foundation:

- We now have more Chapters (41) than ever before in our history, and more groups continue to express interest in applying for Chapter affiliation.
- We now have more Centers (53) than ever before in our history, despite the fact that by raising the standards for designation, several institutions were not redesignated as Centers in the last cycle. Several new institutions have already indicated that they will apply for designation in the next cycle.
- We now have more publications than ever before in our history, including 9 Educational Manuals (two new ones), and two additional Manuals (on mid-stage and late-stage Parkinson disease) yet to be printed.
- For the first time in memory, the *Parkinson Report* has been revamped, as you will note by comparing our fall and winter, 2006 issues of the *Parkinson Report* with earlier ones, to make it more readable and better organized.
- We have now trained several hundred professionals, including nurses and therapists, in how to treat persons with Parkinson disease, under our Allied Team Training Program (ATTP), and our Community Partners Program (CPP) continues to reach more people not properly attended to or never before reached.
- We have continued to treat with the greatest care each dollar that our donors provide to us, as our overhead and administrative costs last year amounted to only 7% of our operating revenues, or 7 cents on the dollar.

We are proud to be the nation's oldest and largest Parkinson foundation, and with the continued generosity of our donors, we shall continue our fight to eradicate Parkinson disease from the face of the earth. Together, we will win that fight.



Paul F. Orefice



Nathan Slewett, Esq.



Daniel Arty, C.P.A.

A handwritten signature in black ink, appearing to read "Paul Orefice".

Chairman

A handwritten signature in black ink, appearing to read "Nathan Slewett".

Chairman Emeritus

A handwritten signature in black ink, appearing to read "Daniel Arty".

President

The Fight Goes On

HISTORY OF THE NATIONAL PARKINSON FOUNDATION

When Mrs. Jeanne C. Levey founded the National Parkinson Foundation just prior to 1957, little was known about Parkinson disease. Mrs. Levey recognized the need to establish a Foundation to help meet the needs of people with Parkinson disease, including her husband.

For 22 years, until her death at age 92, Jeanne Levey nurtured NPF and watched it grow, as more and more people became involved with and benefited from the work of the Foundation. In just a few years the annual budget grew to a whopping \$50,000.

In 1979, the Board of Directors faced the challenge of replacing Mrs. Levey and turned to Nathan Slewett. Mr. Slewett, a successful businessman and attorney, had been a member of the Board for several years, but he had not been very active with the Foundation. At the age of 66, Mr. Slewett agreed to become President and, later, Chairman of the Board of NPF, and has devoted the last 27 years – he is now 93 years young – to working as a volunteer, a task that to this day brings him to the NPF offices every workday of the year.

Today, NPF is the largest and oldest national Parkinson foundation in the United States. NPF supports Parkinson-related research, patient care, education, training, and outreach. Our educational manuals cover a variety of topics of interest to the Parkinson community and are distributed free of charge to anyone that requests them.

There are now 41 affiliated Chapters of NPF throughout the United States, Puerto Rico, and the Bahamas. We have 35 NPF Centers of Excellence,

24 in the United States and 11 on four continents around the world. Ten NPF Care Centers and eight NPF Outreach Centers provide care, education and support. Our many Chapters and Centers work with hundreds of people in Support Groups throughout the United States.

Our Allied Team Training for Parkinson (ATTP) Program has trained hundreds of professionals in venues around the country in the proper care of persons with Parkinson disease, and our Community Partners Program (CPP) seeks to identify underserved communities, forge alliances with health-care providers, and make available resources not otherwise known or accessible to thousands of persons needing help.

NPF sponsors a biennial International Symposium on Parkinson Research, assembling pre-eminent researchers worldwide to present and discuss the latest investigative developments in the field of Parkinson disease.

Our website, www.parkinson.org, is the most visited website of its kind and includes such interactive features as Ask the Doctor, Ask the Surgeon, and Ask the Dietician.

The National Parkinson Foundation has become a holistic, worldwide organization on a scale that Mrs. Levey probably never dared to dream of when she took those first steps half a century ago.

Honorary Board of Governors

NPF has been fortunate to benefit from the longtime service and dedication of the members of its Honorary Board of Governors and its late Chairman, Bob Hope. Upon Bob Hope's passing, his daughter, Linda Hope, graciously agreed to serve as Vice Chair of the Honorary Board of Governors, and Mr. Dick Clark, a longtime friend and generous supporter of NPF, agreed to become chair.

The NPF Honorary Board of Governors is composed of the following outstanding individuals, to each of whom the Foundation owes a debt of gratitude:

Dick Clark, *Chair*

Linda Hope, *Vice Chair*

Henny Backus*

Nathan Blaser*

Robert A.M. Coppenrath
Former Vice-Chairman of AGFA Corporation

Phyllis Diller

Eric Emanuel*

Betty Ford

President Gerald R. Ford*

Kenneth O. Gilmore*

David B. Golub,
Manging Director of Centre Partners Management LLC

Bob Hope*

David Laventhol, *Editor-At-Large*
Times Mirror

Edwin A. Levy, *Wall Street Financier*

Dr. Sidney L. Olson*

Paul F. Oreffice, *Former Chairman*
Dow Chemical Company

U.S. Senator Claiborne Pell

Sylvia A. Sack, *Publisher*

Professor Erich Segal, *Author*

Richard B. Stolley
Senior Editorial Adviser, Time, Inc.

Nicholas L. Teti, *President and*
CEO, INAMED Corporation

Martin Tuchman

Norma G. Udall

U.S. Congressman Henry A. Waxman

U.S. Senator Paul D. Wellstone*

* Deceased

NPF Officers and Directors

The National Parkinson Foundation is privileged to have an outstanding and dedicated group of volunteers who donate their time and talents by serving as Officers and Directors of the Foundation. Without their selfless efforts, the work of the Foundation would not be possible.

CHAIRMAN

Paul F. Oreffice *

SECRETARY

Alan M. Slewett *

CHAIRMAN EMERITUS

Nathan Slewett, Esq. *

ASSISTANT SECRETARY

W. James Orovitz *

PRESIDENT

Daniel Arty, C.P.A. *

MEMBERS AT LARGE

A. Jeffrey Barash, Esq.

Marshall R. Burack, Esq. *

PRESIDENT EMERITUS

Harold P. Kravitz, Esq. *

Carmen Cartaya, Esq. *

Martin J. Gelb

Hon. Shelley J. Kravitz

EXECUTIVE VICE PRESIDENTS

E. Richard Alhadeff, Esq. *

Edythe Kay-Marsa *

Edward Pazicky *

Clarence Pittman

Robert H. Traurig, Esq. *

Sen. Paul Steinberg *

VICE PRESIDENTS

Jo Ann Pepper Oreffice

Carol Greenberg

HONORARY MEMBERS

Harold Beck

James T. Cordy

TREASURER

Edward Kalikow *

Michael Landa

Ira Levenshon

Harriet Rubens

* *Member of the Executive Committee*

NPF Senior Staff

Jose Garcia-Pedrosa
Chief Operating Officer

Pamela Olmo, C.P.A.
Controller

Ruth A. Hagestuen, R.N., M.A.
Director of Field Services

Mary Ann Sprinkle
Director of Development

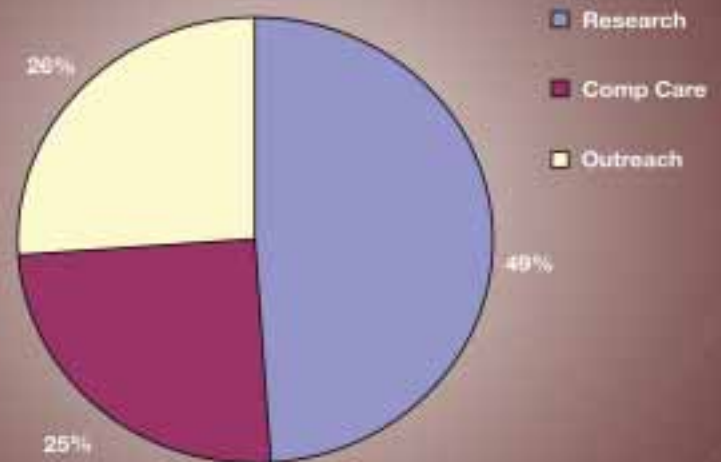


The National Parkinson Foundation supports laboratory and clinical research throughout the world through designated NPF Centers of Excellence. NPF also provides grants to individual investigators to develop new and promising ideas that may help find the cure for Parkinson disease.

NPF is equally committed to laboratory research and to clinical research, which is designed to bring the accumulating knowledge from the laboratory and clinical studies to the hands of care providers and people living with Parkinson disease. NPF also collaborated with the University of Miami Miller School of Medicine in creating one of the first brain banks in the world and continues to support the NPF/UM Brain Endowment Bank. Tissue collected from both healthy and diseased brains is available to researchers anywhere in the world.

NPF's Board of Directors has mandated that half of our mission-related expenditures be devoted to research and half to patient care and outreach. This chart represents the fulfillment of that directive.

NPF Grants by type



\$9,351,428

NPF Grants Approved in 2006

NPF Center Grants	\$	4,783,928
- Research (19)	\$	1,181,548
- Care (27)	\$	1,457,722
- Outreach (41).....	\$	2,144,658
<hr/>		
Mega Research Grants (4 Grants)	\$	2,000,000
Individual Research Grants (12 Grants)	\$	480,000
NPF Chapter Grants (12 Grants)	\$	87,500
Parkinson Action Network (PAN) - Advocacy	\$	200,000
University of Miami Parkinson Project and Brain Bank.....	\$	1,800,000
 GRAND TOTAL	 \$	 9,351,428

CENTER GRANT RECIPIENTS 2006-2007

NPF values its partnership with each of its Centers and works in close collaboration with them to improve the quality and accessibility of care, provide professional and community education about Parkinson disease, and build models which can be piloted at the local level and then implemented through NPF's broad network of Centers and other facilities.

The listing below is a representative sample of the many creative and innovative projects currently being funded through the Centers grants process to improve the care of, and quality of life for, persons living with Parkinson disease and their family members:

Hôpital de la Salpêtrière, Paris

Neuroprotective role of nicotine in experimental models of Parkinson disease

Analyze the mechanism by which smoking reduces the risk to develop Parkinson's with emphasis on the putative neuroprotective role of nicotine. They intend to identify the exact mechanism of action of

nicotine and develop new therapeutic strategies (nicotine receptor pharmacology) avoiding the side effects of nicotine.

University of Rochester

Group visits for persons with Parkinson disease

Although shown to improve quality of life, increased physician satisfaction, and decreased utilization of health care resources, the feasibility and potential benefits of group visits have not yet been evaluated for persons with Parkinson disease (PD). This study is designed to optimize the group visit model for persons with PD to determine feasibility, responsiveness of outcome measures, and preliminary efficacy of group visits in a pilot, randomized controlled trial of group visits.

Oregon Health & Science University

Improving comprehensive assessment

This grant provides funds for evaluation of patients for depression and antidepressant treatment; daytime sleepiness to help understand dopamine

agonist use, driving risk and screening for caregiver strain. The screenings underscored the need to assess caregiver strain, client depression and antidepressant use; as well dopamine agonist use specifically related to driving.

Struther's Parkinson Center

Focus on recent diagnosis in Parkinson disease: A comprehensive team approach

This grant develops a proactive team approach for education, care, wellness, support and empowerment of recently diagnosed Parkinson patients, encouraging them to become active partners in their care. The program also provides access to the interdisciplinary team throughout the first year of diagnosis.

University of British Columbia

Nursing education

The Center, in collaboration with Parkinson Society of British Columbia, developed and tested a curriculum, "Creating A Regional Expert in PD" (CaRE in PD) for health care providers in geriatric long term care. The CARE in PD presentation has been adapted for nursing assistants for whom English is a second language and for family caregivers.

Tel Aviv Sourasky Medical Center

Caring for the caregivers

In spite of the significant impact on the quality of life for the entire family with Parkinson disease, the patient's spouse and children receive little, if any, attention throughout the course of the disease. This grant supports a special clinic to assess caregiver needs, and provide support, information, education and practical advice, as well as refer them to other specialists if needed. This has been an effective intervention and benefits the entire family with Parkinson disease.

University of Southern California

Community outreach

This grant is to support development and implementation of a modular community-based informational program to meet the education and information needs of professionals and paraprofessionals who provide service for patients with Parkinson disease, as well as the patients themselves and their caregivers. The program will be given at adult day health centers, senior centers, and patient or caregiver support groups.

Kansas University Medical Center

Telemedicine in rural communities

The majority of patients in rural areas do not receive expert care for their PD nor are they able to attend educational events. The objectives of this program are to identify areas of need in rural Kansas, locate patients in rural areas and help them to form support groups, and provide educational programs and clinical services via interactive telemedicine. The goals are to improve clinical care, increase education and awareness of PD in rural areas and improve quality of life for persons with PD.

Victorian Comprehensive Parkinson's Program, Australia

Expansion of the movement disorders community support service

This outreach grant is designed to optimize quality of life and functional capacity of people living with Parkinson disease through expanding the interdisciplinary team and increasing geographical access to specialized services, particularly from rural areas so that more persons with Parkinson disease can receive comprehensive care.

Mega Grant Recipients 2006-07

Mark D. Bevan, Ph.D., Thomas Wichmann, M.D.
- *Northwestern University*

"Cellular Mechanisms Underlying the Therapeutic Benefit of High-Frequency Stimulation of the Subthalamic Nucleus for Parkinson's Disease"

High-frequency electrical stimulation (HFS) of the subthalamic nucleus (STN) is the preferred surgical intervention in the treatment of Parkinson's disease (PD) but the precise cellular mechanisms underlying its therapeutic efficacy are poorly defined. Application of state-of-the-art cellular electrophysiological techniques will be employed to address the effects of HFS on STN neurons and on synaptic communication within and outside the STN in animal models of PD. These studies will deepen our understanding of the factors underlying the efficacy of HFS of the STN for PD.

Bruce Spiegelman, Ph.D., David Simon, M.D., Ph.D.
- *Dana-Farber Cancer Institute*

"PGC-1 alpha and Neuroprotection in Parkinson Disease"

PGC-1 alpha is a gene that functions to increase oxygen consumption by many cells, including nerve cells. We have most recently found that it also decreases the production of reactive oxygen species by cells. Our new work will ask if raising the levels of PGC-1 alpha in mice will render the substantia nigra (SN) resistant to damage with a variety of agents that cause PD. These data may establish a new paradigm for how to spare cells of the SN in PD.

Shu G. Chen, Ph.D., Amy L. Wilson-Delfosse, Ph.D., Kevan M. Shokat, Ph.D.
- *Case Western Reserve University*

"Uncovering the pathogenic role of LRRK2 in Parkinson disease using molecular and chemical genetic approaches"
Despite the genetic significance of LRRK2 in the development of PD, neither the activation

mechanisms nor cellular substrates for LRRK2 have been elucidated. This collaborative research project will use a combination of molecular and chemical genetic approaches. Hopefully, our studies will not only provide molecular insights into the biological functions of LRRK2 relevant to PD pathogenesis, but also discover LRRK2 substrates as potential therapeutic targets for PD.

Yoland Smith, Ph.D., Thomas Wichmann, M.D., Leonard Howell, Ph.D., Gilles Tamagnan, Ph.D.
- *Emory University*

"Metabotropic Glutamate Receptors: Novel Targets for Parkinson's Disease Pharmacotherapy"

We propose to use a combination of behavioral and electrophysiological techniques to assess the antiparkinsonian efficacy of specific mGluR antagonists in MPTP-treated nonhuman primates, considered as the "gold standard" model of PD. Our preclinical studies will provide solid evidence that mGluR antagonists are a new class of non-dopaminergic drugs that can be used to treat the symptoms and the progression of Parkinson's disease in humans.

Individual Research Grant Recipients 2006-07

Katherine Sturm-Ramirez, Ph.D.
- *St. Jude Children's Research Hospital*

"Is H5N1 influenza virus a novel etiological agent in the development of experimental parkinsonism?"

With the current risk of a human influenza pandemic due to H5N1 that is spreading rapidly throughout the world, the potential for another outbreak of post-encephalitic parkinsonism is significant. In this application, we propose to investigate if infection with avian H5N1 influenza viruses can either directly or indirectly lead to the death of neurons in the substantia nigra pars compacta, a hallmark of Parkinson's disease in a mammalian species.

Andrea Kuhn, M.D.

- *University College London*

"Frequency-specific effects of electrical brain stimulation on neuronal oscillations and motor performance in patients with Parkinson's disease"

Recent results propose that motor deficits in PD patients may be related to increased oscillatory neuronal activity in the so-called beta frequency band (13-30 Hz) in the basal ganglia. The research will test whether frequency-specific brain stimulation, namely at high frequency, may suppress the pathologically enhanced beta activity and whether the stimulation effect is correlated to improvement in motor symptoms.

Benjamin N. R. Chetty, M.D., Ph.D.

- *University of California San Francisco*

"Dact1/Dpr1 in Dopaminergic Development"

We are interested in a member of the Dpr/Frodo gene family which is present in the developing midbrain at the time of dopamine cell generation. We have genetically engineered a mutation in this gene in mice. We are studying the causes of midbrain expansion in this mouse line, focusing on mutant effects on cell communication that have consequences for dopamine cell generation and survival. If we understand the role of these molecules in normal dopamine cell development and maintenance, we will open new windows into the biological causes of Parkinson Disease and new doors to potential cures.

Eric Vilain, M.D., Ph.D.

- *University of California, Los Angeles*

"Role of the male-specific transcription factor SRY on dopaminergic function: implications for gender differences in Parkinson's disease"

Parkinson's disease occurs 1.5 times more often in men than women. We have evidence that SRY, the gene that is present exclusively in males on the Y chromosome and that is responsible for the presence of testicles, is also found in men's brain. This

proposal will test if there are indeed male and female-specific ways to make dopamine, and if they can compensate for each other.

Robert Malenka, M.D., Ph.D.

- *Stanford University School of Medicine*

"Synaptic Function and Plasticity in Indirect and Direct Pathway Striatal Neurons"

Cells that are connected directly to output areas of the basal ganglia are known as "direct pathway" cells, whereas cells that connect to intermediate basal ganglia areas are known as "indirect pathway" cells. Proper control of movement is thought to require balanced activity in direct and indirect pathway cells. Our studies will investigate the properties of cells and their inputs in the direct and indirect pathways, both under normal conditions and in the absence of dopamine, with the aim of discovering new drug targets that can restore balance to these brain circuits in the absence of dopamine.

Lachlan Thompson, Ph.D.

- *Wallenberg Neuroscience Center, Lund University*

"Identification and selective isolation of dopamine neuron progenitors from foetal midbrain for transplantation in animal models of Parkinson's disease"

Through the technique of 'fluorescence activated cell sorting (FACS)', researchers will selectively isolate sub-fractions of cells from the foetal midbrain, based on their differentiation state, and identify which cell type is best suited to giving rise to mature dopamine neurons following transplantation. The results from this project will be highly relevant for current efforts in the field to develop safe and effective protocols for transplantation therapy of PD using embryonic stem (ES) cells.

Margaret Rice, Ph.D.
- NYU School of Medicine

"Mitochondrial Dysfunction and Somatodendritic Dopamine Release"

Mitochondrial dysfunction is implicated in Parkinson's disease, possibly via oxidative stress resulting from generation of reactive oxygen species, like hydrogen peroxide. We will examine whether false peroxide signaling during mitochondrial dysfunction, mimicked by the pesticide rotenone, leads to excessive inhibition of dopamine neurotransmission by suppressing dopamine neuron activity and consequent dopamine release.

Youren Tong, Ph.D.
- Brigham and Women's Hospital,
Harvard Medical School

"Generation and characterization of LRRK2 Transgenic and Knockin Mice"

To investigate the pathogenic mechanism by which mutations in LRRK2 cause PD, I propose to generate transgenic mice over expressing human mutant (R1441C) or wild-type LRRK2 as well as knockin mice, in which a commonly found mutant form (R1441C) of LRRK2 is expressed under the control of the endogenous regulatory elements. The study of the LRRK2 mutant mice would provide a meaningful contribution to the understanding of the sporadic as well as the familial form of PD.

Zachary Baquet, Ph.D.
- St. Jude Children's Research Hospital

"Analysis of immune system response in a mouse model of Parkinson's disease"

With this grant we seek to experimentally determine the role that T-cells and other components of the immune system, isolated in both genetically modified and chemically induced models, play in both the etiology and progression of experimental Parkinson's disease. Our goal is to find ways to slow the progression of this disease thus providing for a better quality of life for its sufferers.

Wanli W. Smith, M.D., Ph.D.
- Johns Hopkins University School of Medicine

"Mutant LRRK2 toxicity and kinase activity"

We recently found that mutant LRRK2 proteins cause neuronal death. In this proposal, we will determine whether alteration of the LRRK2 kinase activity influences mutant LRRK2-induced cell death using genetic and cell culture approaches. These studies will enlarge our knowledge of LRRK2 kinase function, will help elucidate the pathogenesis of LRRK2-associated neuronal loss in PD, and will provide the new avenues to develop new PD therapeutic strategies by regulation of LRRK2 kinase activity.

NPF Scientific Advisory Board

NPF's Scientific Advisory Board, made up of leading researchers and prominent physicians independent of the Foundation, keeps abreast of and at the forefront of new research initiatives and discoveries that are made by researchers throughout the world. Members of NPF's Scientific Advisory Board meet on an annual basis to evaluate the research grant applications that have been received, as well as the progress of work being done with current grants. This ensures that the efficiency of research dollars will be maximized. All NPF grants are utilized purely for research and cannot be used for overhead, travel, or other administrative expenses.

Following is a list of the members of the NPF Scientific Advisory Board:

Ariel Y. Deutch, Ph.D. (Chair)

Vanderbilt University
School of Medicine,
Department of Psychiatry
Nashville, Tennessee

Donald Calne, D.M., F.R.C.P.

Belzberg Family Professor of Medicine,
Head, Division of Neurology
University of British Columbia
Health Sciences Centre Hospital
Vancouver, British Columbia, Canada

David F. Clayton, Ph.D.

University of Illinois
Urbana, Illinois

Robert H. Edwards, M.D.

University of California San Francisco
San Francisco, California

Julia George, Ph.D.

University of Illinois
Urbana, Illinois

Ann M. Graybiel, Ph.D.

Walter A. Rosenblith Professor
Massachusetts Institute of Technology
Cambridge, Massachusetts

Mark Guttman, M.D.

Adult Neurology and Movement Disorders
Markham-Stouffville Health Centre
Markham, Ontario, Canada

Mark Hallett, M.D.

Clinical Director, Section of Neurology
National Institute of Neurological Disorders
and Stroke (NINDS)
Bethesda, Maryland

Franz F. Hefti, Ph.D.

James E. Birren Professor of Gerontology
NPF Research Scholar, Merck, Sharpe and Dohme
San Diego, California

Irwin J. Kopin, M.D.

Former Director,
Intramural Research Program
National Institute of Neurological
Disorders and Stroke (NINDS)
Bethesda, Maryland

George Paulson, M.D.

The Ohio State University Hospital
Columbus, Ohio

Ian Reynolds, Ph.D.

Merck, Inc.

David R. Sibley, Ph.D.

National Institute of Neurological
Disorders and Stroke (NINDS)
Bethesda, Maryland

A. Jon Stoessl, D.M.

Professor of Medicine,
Head, Division of Neurology
University of British Columbia,
Health Sciences Centre Hospital
Vancouver, British Columbia, Canada

Stella E. Tsirka, Ph.D.

University Medical Center at Stony Brook
Stony Brook, New York

Anne B. Young, M.D.

Julianne Dorn Professor, Harvard Medical School
Chief of Neurology Service,
Massachusetts General Hospital
Boston, Massachusetts

NPF Centers Review Board

The Board of Directors of the National Parkinson Foundation has adopted a Charter for Centers of Excellence, NPF Care Centers, and NPF Outreach Centers. The Charter outlines the standards required of Centers, describes the relationship between the Centers and the Foundation, and sets forth the procedures applicable to applying for and obtaining both designation as a Center and grants to designated Centers. The following persons have been appointed by the NPF Board of Directors to serve on the NPF Centers Review Board:

Elaine V. Cohen, Ph.D.

Consultant in Research/ Evaluation and
Program Development, Field Services
National Parkinson Foundation
New York, New York

Marge Gibbons, Ed.D., CCC-SLP

Consultant / Clinician
American Retirement Community, Inc.
Holiday, Florida

Gladys Gonzalez-Ramos, Ph.D.

Associate Professor of Social Work
New York University
Consultant to Field Services
National Parkinson Foundation
New York, New York

Ruth A. Hagestuen, R.N., M.A. (Chair)

Director of Field Services
National Parkinson Foundation
Miami, Florida

Franz F. Hefti, Ph.D.

James E. Biren Professor of Gerontology
NPF Research Scholar, Merck, Sharpe and Dohme
San Diego, California

Jean P. Hubble, M.D.

Executive Director, Global Medical Strategy Leader –
Neurology
Johnson & Johnson Pharmaceutical Services, LLC
Raritan, New Jersey

J. Thomas Hutton, M.D., Ph.D.

Former Director
Neurology Research Center
St. Mary of the Plains Hospital
Lubbock, Texas

Susan C. Imke, R.N., M.S.

Gerontological Nurse Practitioner
Senior Health Solutions, Inc.
N. Richland Hills, Texas

Ricky Joseph, Ph.D., OTR/L

Assistant Professor and Department of Occupational Therapy
School of Allied Health Sciences, Medical College of Georgia
Augusta, Georgia

Gale Kittle, R.N., M.P.H.

Research Nurse Clinician
St. Joseph's Hospital & Medical Center
Phoenix, Arizona

Irwin J. Kopin, M.D.

Former Director, Intramural Research Program
National Institute of Neurological Disorders
& Stroke (NINDS)
Bethesda, Maryland

Ronald F. Pfeiffer, M.D.

Professor and Vice-Chair of Neurology
University of Tennessee Health Science Center
Memphis, Tennessee

Michele Tagliati, M. D.

Associate Prof. of Neurology, Division Chief
Movement Disorders Mount Sinai Medical Center
New York, New York

The Fight Goes On – NPF Centers

Based at leading medical and research institutions, NPF's international network of 53 designated Centers serves people with Parkinson disease, their families and communities, and healthcare professionals worldwide. The Centers continually set new standards of excellence and innovation in NPF's core interests: research, comprehensive care and outreach. The designation of NPF Center of Excellence

requires the highest quality comprehensive care and most advanced research in Parkinson disease. Its hallmarks are the inspiration, motivation and commitment that lead to the best practices, the most appropriate outreach to all families affected by Parkinson disease, and the latest groundbreaking research that will ultimately lead to a cure for this challenging disease.

NPF CENTERS of EXCELLENCE

Centro Neurológico, Hospital Frances
Buenos Aires, Argentina

Muhammad Ali Parkinson Center,
Barrow Neurological Institute
Phoenix, Arizona

Victorian Comprehensive Parkinson's Program
Cheltenham, Victoria, Australia

University of Southern California, Parkinson's Disease and
Other Movement Disorders Center
Los Angeles, California

University of California, San Francisco,
Parkinson's Disease Clinic and Research Center
San Francisco, California

Markham Stouffville Hospital, Centre for
Movement Disorders
Markham, Ontario, Canada

Toronto Western Hospital Movement Disorders Center
Toronto, Ontario, Canada

University of British Columbia,
Pacific Parkinson's Research Centre
Vancouver, British Columbia, Canada

Georgetown University Hospital
Washington, D.C.

King's College London
London, England

University of Florida Parkinson's Disease &
Movement Disorders Center
Gainesville, Florida

University of South Florida Parkinson's Disease &
Movement Disorders Center
Tampa, Florida

Université Pierre et Marie Curie, INSERM
Hôpital de la Salpêtrière
Paris, France

Medical College of Georgia,
Movement Disorders Program
Augusta, Georgia

Kuakini Medical Center,
Parkinson Disease Center of Excellence
Honolulu, Hawaii

Northwestern University Parkinson's Disease &
Movement Disorders Center
Chicago, Illinois

Rabin Medical Center,
Sackler School of Medicine
Petah-Tiqva, Israel

Tel Aviv Sourasky Medical Center
Tel Aviv, Israel



University of Kansas Medical Center
Kansas City, Kansas

Johns Hopkins Parkinson's Disease and
Movement Disorders Center
Baltimore, Maryland

Harvard Medical School,
Massachusetts General Hospital
Boston, Massachusetts

Beth Israel Deaconess Medical Center,
Parkinson's Disease & Movement Disorders Center
Boston, Massachusetts

University of Michigan
Ann Arbor, Michigan

Struthers Parkinson's Center
Golden Valley, Minnesota

Nijmegen Parkinson Center
Nijmegen, The Netherlands

Kings County Hospital / SUNY Downstate Medical Center
Brooklyn, New York

Yarmon Center for Parkinson's
Disease at Beth Israel Medical Center
New York, New York

University of Rochester Medical Center
Rochester, New York

University of North Carolina at
Chapel Hill School of Medicine
Chapel Hill, North Carolina

Center for Neurological Restoration,
Cleveland Clinic Foundation
Cleveland, Ohio

Oregon Health & Science University,
Parkinson Center of Oregon
Portland, Oregon

University of Pennsylvania,
Parkinson's Disease and Movement Disorders Center
Philadelphia, Pennsylvania

National Neuroscience Institute Parkinson's Disease and
Movement Disorder Centre
Singapore

Vanderbilt University Medical Center
Nashville, Tennessee

Baylor College of Medicine, Parkinson's Disease Center &
Movement Disorders Clinic
Houston, Texas

NPF CARE CENTERS

The Parkinson Center at Hoag Hospital
Newport Beach, California

The Deer Lodge Centre Movement Disorder Clinic
Winnipeg Regional Health Authority
Winnipeg, Manitoba, Canada

Colorado Neurological Institute Movement Disorders Center
Englewood, Colorado

Parkinson's Clinic of the Ozarks
Springfield, Missouri

Notre Dame des Secour Hospital, Parkinson Memory &
Movement Disorders Center
Byblos/Jbeil, Lebanon

Health South Parkinson/Movement Disorder Center and Deep
Brain Stimulation Program
Albuquerque, New Mexico

Bellevue Center for Parkinson and
Related Movement Disorders
New York, New York

Texas A&M Health Science Center, Plummer Movement
Disorders Center at Scott & White Hospital
Temple, Texas

Booth Gardner Parkinson's Care Center
Kirkland, Washington

Aurora Sinai Medical Center, Regional Parkinson Center
Milwaukee, Wisconsin



NPF OUTREACH CENTERS

Florida Atlantic University Parkinson's Center
Boca Raton, Florida

Lee Parkinson's Outreach Center
Fort Myers, Florida

Parkinson Association of Southwest Florida
Naples, Florida

Florida Hospital Neuroscience Institute Parkinson Center
Orlando, Florida

Tallahassee Memorial Parkinson Center
Tallahassee, Florida

Nevada Neuroscience Foundation
Henderson, Nevada

University of Buffalo
Comprehensive Movement Disorders Center
Buffalo, New York

Parkinson Foundation of the National Capital Area
McLean, Virginia

NPF CHAPTERS

NPF seeks to be a uniting force in the Parkinson community, one in which the organization at large, its Centers, and grassroots Chapter network form an integrated system. Chapters have an important role as local and regional partners of NPF in identifying needs and helping deliver access to the right care, information, and support. NPF seeks to assist Chapters in increasing their capacity to serve their communities, thereby maximizing quality of life as needs change throughout the course of the disease.

Arizona Chapter of the
National Parkinson Foundation
Phoenix, Arizona

Kingdor National Parkinson Foundation
Nassau, Bahamas

Los Angeles Alliance Against Parkinson's Disease
Los Angeles, California

National Parkinson Foundation -
Orange County Chapter
Newport Beach, California

NORCAL NPF Chapter
Redding, California

Parkinson Association of Northern California
Sacramento, California

Parkinson Network of Mount Diablo
Walnut Creek, California

Colorado Parkinson Foundation
Colorado Springs, Colorado

Northeast Parkinson's and Caregivers
Middletown, Connecticut

South Palm Beach County Chapter of NPF
Boca Raton, Florida

The Parkinson Association of
Greater Daytona Beach
Daytona Beach, Florida

Parkinson Association of Southwest Florida
Naples, Florida

Southeast Parkinson Disease Association
Orlando, Florida

St. Augustine Parkinson's Disease Support Group
St. Augustine, Florida

North Florida Parkinson Awareness Group
Tallahassee, Florida

Alzheimer/Parkinson Association
of Indian River County
Vero Beach, Florida

Central Savannah River Area Parkinson
Support Group - Augusta Chapter
Grovetown, Georgia

Northwest Georgia Parkinson Disease Association
Rome, Georgia

Hawaii Parkinson Association
Honolulu, Hawaii

Parkinson Foundation of the Heartland
Overland Park, Kansas

Northeast Kansas Parkinson Association
Topeka, Kansas

Eljay Foundation for Parkinson Syndrome Awareness
Lake Charles, Louisiana

Cape Cod Chapter, Inc. of the
National Parkinson Foundation
East Dennis, Massachusetts

Parkinson Association of West Michigan
Grand Rapids, Michigan

Parkinson Association of Minnesota
Golden Valley, Minnesota

Parkinson's Group of the Ozarks
Springfield, Missouri

Brooklyn Parkinson Group
Brooklyn, New York

Parkinson Support Group of Syracuse
Clay, New York

Parkinson's Association of
Western New York
Depew, New York

Parkinson's Support Group of
Upstate New York, Inc. - Rochester Chapter
Rochester, New York

Midwest Parkinson's Awareness of Northeast Ohio
Alliance, Ohio

Parkinson's Resources of Oregon
Portland, Oregon

Lehigh Valley Parkinson Support Group
Allentown, Pennsylvania

The Parkinson Council - Philadelphia Chapter
Bala Cynwyd, Pennsylvania

Parkinson Chapter of Greater Pittsburgh
Pittsburgh, Pennsylvania

Asociacion Puertorriqueña de Parkinson
Carolina, Puerto Rico

Fundacion Puertorriqueña de Parkinson
San Juan, Puerto Rico

Parkinson Association of South Dakota
Sioux Falls, South Dakota

Parkinson Foundation of the National Capital Area
McLean, Virginia

Parkinson Educational Society of Puget Sound
Olympia, Washington

Wisconsin Parkinson Association
Milwaukee, Wisconsin





NPF PROGRAMS and SERVICES

Together with ongoing funding for and support of leading-edge research efforts, our many programs and services are the forefront of fighting back and moving forward. From training health providers and allied health professionals to better initiate and integrate care, to providing an exceptional range of public information, to fostering innovative outreach efforts in the community, NPF brings tools, talent and inspiration to all those living with and striving against Parkinson.

PROFESSIONAL EDUCATION

Charting a new course in quality health care delivery



Allied Team Training for Parkinson (ATTP) is an intensive four-day, team-based national training initiative for allied health professionals

designed to improve interdisciplinary care in Parkinson disease. ATTP has been recognized by



ATTP training group

the U.S. Department of Health and Human Services as a “stellar program”. Comments from the Health Resources Services Administration (HRSA) evaluators included the following:

“ATTP has helped to distinguish NPF as innovators of effective new initiatives to improve the system of care not only for PD, but for other chronic diseases as well. ATTP offered enormous professional and personal growth for the participants. Participants leave the trainings not only more educated about many aspects of PD, but also educated about an interdisciplinary, team-based approach to care. The trainees are taking the team training and interdisciplinary aspects and making real changes in their workplaces in order to implement them. Potentially this project could spread beyond impacting PD care to impact how care is delivered throughout the entire medical field.”

COMMUNITY OUTREACH

Building powerful and vital relationships nationwide

A commitment to developing appropriate services for all communities is evidenced by NPF’s requirement that every designated Center be actively involved in facilitating access to education, support

and comprehensive care. NPF believes in “access for all,” so that every family affected by Parkinson disease is able to find the right services at



the right time – services that are meaningful to the individual and the community at large.

Outreach strategies include thoughtful and active collaboration with diverse, underserved urban and rural communities.

Community Partners for Parkinson Care (CPP)

A developing model for best practices in outreach

CPP, partially funded through a grant from the Medtronic Foundation, is NPF’s “learning lab” for how to most effectively build partnerships for outreach to diverse and rural communities.

CPP is a national outreach initiative, focused on the development of partnerships to create innovative strategies for overcoming the cultural, language, geographic and health barriers that limit access to education, support and comprehensive care in Parkinson disease.

Regional coalitions are established between NPF Centers and affiliate Chapters as well as local agencies and community leaders; there are seven coalitions operating in cities and rural areas across the country.



INFORMATION SERVICES

With knowledge forming the foundation of care and cure, NPF expends over \$1,000,000 annually to provide its information services program free of charge to the public.

Access to the latest information on Parkinson disease, its treatment, and access to care is critical for affected families. The National Parkinson Foundation stands as the major clearinghouse for information regarding all aspects of the disease. The sheer volume of inquiries and requests is evidence of the high value that the greater Parkinson community places on these services. Information is provided through many channels, from print to the Internet:



Website: www.parkinson.org is the centerpiece of NPF information services, receiving as many as 100,000 visitors each month. This resource provides access to the most current care and support services available, as well as a huge volume of information relating to Parkinson disease from all sources within and beyond the Foundation. The Discussion Corner is an interactive feature enabling people with Parkinson and their carepartners to have their questions answered by leading professionals in each specialty area, and to connect with other members of our community. Online Forums include the very popular Ask the Doctor, which is staffed by movement disorder neurologists from the University of Florida; Ask the Surgeon; Ask the Speech Clinician;

Ask the Dietician; Caregivers Forum; Young-Onset Forum; and an Open Forum.

National Toll Free Information: available nationwide at **1-800-327-4545**.

NPF library: this resource includes a range of literature of specific relevance to the Parkinson community. Each month, NPF headquarters in Miami receives 1,600-2,000 mail, internet and telephone orders for publications from individuals, groups, institutions and other Parkinson disease organizations – all of which are filled free of charge.



The Parkinson Report is an informative and inspirational quarterly magazine featuring articles written by Parkinson researchers, medical practitioners and caregivers, along with contributions from NPF staff. The Foundation distributes over 100,000 copies of each issue, with a readership of some 400,000 individuals. Current and prior issues dating back to the fourth quarter of 2001 are available on the website.

Webcast Conferences

Through the marvel of internet communications, now everyone can attend a conference. Webcasting enables Chapters, support groups, families affected by Parkinson disease, and anyone literally the world over to view signature NPF Educational Conferences. NPF is committed to leveraging the use of technology to increase access to informed care and educational services. Conference webcasts are available, free of charge, via our website, www.parkinson.org.

The Texas Voice Project

Last January NPF began an experimental program in Dallas, Texas, designed to reach a large portion of persons with Parkinson disease in Dallas who need voice therapy but are not receiving it. Using the patented techniques of the Lee Silverman Voice Therapy™, it is anticipated that over 200 persons will have been treated in 2006 by several LSVT-certified therapists under the direction of Project Director Samantha Elandary. The success rate has been almost 100%.

NPF provided the initial funding needed to launch the project, and the Dallas community has responded with significant donations to cover the cost of the program and allow it to continue. Inquiries have been received from other parts of the country, asking about the possibility of having this project emulated in their own communities. That possibility will be considered when final results are obtained from Dallas.

The Parkinson Education Series

Authored by noted clinical experts, this series encompasses the most complete body of literature on all aspects of the disease that has ever been written specifically for people with Parkinson disease and their families. Over 200,000 copies are distributed annually free of charge and are available in both English and Spanish.

Titles include:

- What You and Your Family Should Know
- Caring and Coping
- Nutrition Matters
- Speech and Swallowing
- Fitness Counts
- Medications
- Mind, Mood, and Memory
- Guide to Deep Brain Stimulation
- Practical Pointers
- Support Group Leaders Manual



Conferences

The Value of Networking

Center and Chapter Leadership Conference

We look forward, each year, to meeting with our NPF network of medical directors, center coordinators and chapter leaders at our Leadership Conferences. In October 2005, our “Collaboration for Care” Conference was held in San Francisco. We discussed the latest research findings in exercise in Parkinson care; non-motor dysfunction and the issues and challenges of interdisciplinary team development. The meeting was attended by 75 health care professionals and 45 chapter leaders from the U.S. and Canada.

Fourth Annual NPF Young-Onset Parkinson Network Conference, July 6-8, in Reston, Virginia

Each year, NPF is proud to present this important event, coordinated by and for people living with young-onset Parkinson disease.

Conference speakers included clinical experts and professionals in the areas of caregiving, support, and advocacy – many of whom have Parkinson themselves. Once again attracting over 300 participants, this conference has become the place for those young people so often isolated by this disease, to gain knowledge, develop social networks, share life experiences and support each other. Sessions of this conference can be viewed on the internet at www.parkinson.org.



NPF 2005-2006 Events

THE 49TH ANNUAL INTERNATIONAL GALA FOR HOPE



Lynn Diamond

The National Parkinson Foundation celebrated its 49th Annual International Gala for Hope on February 11, 2006 at the JW Marriott Hotel in Miami. The ballroom was trans-

formed into a 1940s Latin nightclub, Club Bamboleo and more than 350 guests wined, dined and danced the night away. Dwight Lauderdale, Local 10 News Anchor, was Master of Ceremonies. Ms. Lynn Diamond, a real estate executive from New York City and a longtime contributor to the National Parkinson Foundation, was the honoree.

Among the attendees were representatives of NPF Chapters and Centers of Excellence from New York, Wisconsin, Philadelphia, Hawaii, Canada, the Bahamas, and Israel.



MOVERS AND SHAKERS ARE AT IT AGAIN!

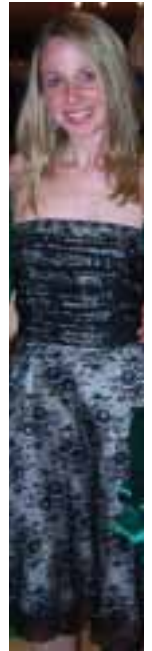
The Movers & Shakers of the Mid-Atlantic region took to the streets of Baltimore

once again for the annual Baltimore Running Festival held on Saturday, October 15, 2005. The Honorary Chair was Jeff Shinholt, the event's founder and tireless advocate for the Parkinson community. Inspired by Jeff Shinholt's efforts, the

Movers & Shakers have raised a quarter of a million dollars towards Jeff's goal of \$1,000,000 to help find the cause and cure for Parkinson disease.

COLLEGE STUDENT'S ASSIGNMENT BECOMES SUCCESSFUL FUNDRAISER

Prom for Parkinson's began as a business course assignment - to write a proposal for a hypothetical event - for Sarah Schramm at the University of Maryland. Sarah says the project was a way to alleviate her anxiety about her father's Parkinson disease. She enlisted the help of Sigma Alpha Iota sorority, which is dedicated to upholding the highest standards in art and life, and the event took off.



Sarah and her sorority sisters recruited two local bands, Soul'd Out and The Heard, who donated their talents to the event. Together they presented the hugely successful Prom for Parkinson's on December 13, 2005 and raised over \$3,300 for NPF.

STUDENTS + PHILANTHROPY = FUNDRAISING SUCCESS

Teens Rock! Kenan and Judy Ashouri organized a Battle of the Bands at Bolles School in Jacksonville, FL on February 17, 2006 and raised over \$1500 for NPF. The sister and brother team recruited members of Kenan's band, Sonoma, and two Palm Coast bands, MyGetaway and Pathway to Providence (pictured at right) who



played in exchange for gas money. The bands posted announcements on their websites and the school promoted the event with flyers and by word of mouth. Students came from as far away as Savannah, GA and the Palm Coast of Florida for a full night of high energy rock!

NPF thanks the many young people who work on our behalf. We hope they find philanthropy to be rewarding and will make it part of their lifetime commitment to giving back! These kids are our future!

KENNETH COLE NEW YORK SPONSORS SHOP FOR CHARITY NIGHT

On May 2, 2006, supporters gathered at the Kenneth Cole New York boutique in the Aventura Mall in South Florida for NPF's second annual Shop for Charity night. NPF received a percentage of the evening's sales. Kenneth Cole has long been an advocate of charity fundraising, donating his own luxury goods and opening his stores as gathering places to raise awareness.



Pictured here, Charlynn Walker, Charity Outreach Coordinator for Kenneth Cole New York and Nathan Slewett, NPF Chairman Emeritus

7TH ANNUAL PARKINSON'S GOLF CLASSIC HONORS FAMILY OF JOHN D. KELLY III



The 7th Annual Parkinson's Golf Classic was held on June 12, 2006 at the renowned Saucon Valley Country Club in Bethlehem, Pennsylvania. In just six years, the Parkinson's Golf Classic has raised nearly \$1,000,000 to support groundbreaking research, innovative programs and the Parkinson's Disease and Movement Disorders Center at the University of Pennsylvania in Philadelphia.

This year's Golf Classic honored the family of John D. Kelly III, who had Parkinson disease. One of Wilmington, Delaware's most colorful local figures, John was well known for his generosity and humor. Each year his family organizes the Kelly's Logan House 5K Run/Walk for Parkinson which is now held in his memory and benefits NPF.



NATIONAL PARKINSON FOUNDATION
List of Donors

NPF AMBASSADORS

The Ambassadors represent cumulative giving of \$100,000 and above. All of our Ambassadors are recognized with a gift of a hand-blown glass caduceus designed especially by the noted artist, Frabel. It represents the ancient Greek symbol of the medical profession and exemplifies our goal to fund the most innovative research worldwide, in order to find the cure for Parkinson disease.

E. Richard Alhadeff, Esq.
Allied Signal Foundation
Leo Amoroso
Beth Israel Medical Center
Edna Boddy
Boehringer Ingelheim
Pharmaceuticals Inc.
James Cayne
Ruth Niggel Chinowth
Kari Clark
Richard Clark
Robert Collins
Community Health Charities
Community Health Charities of
California
Community Health Charities
of Florida
Dorothy Coogan
Hon. Irving & Hazel Cypen
Lynn Diamond
Dow Chemical Company
Dupont Merck Pharmaceuticals
Company
Elan Pharmaceuticals, Inc.
Donald Fine
The Five Millers Family
Foundation, Inc.
Charles H. Gehret
Rollin M. Gerstacker Foundation
GlaxoSmithKline Foundation
The Greenburg-May
Foundation, Inc.
Albert Greenfield
Harold and Jean Grossman
Family Foundation
Health Resources and
Services Administration
Abel Holtz

Dolores Hope
Edythe Kay-Marsa
Barry Kaye Associates, Inc.
Bawa and Kamal Khindri
Eugene and Rose Kleiner
Family Foundation
Heinrich Kolbel
Marjorie & Irvin Korach
Harold P. Kravitz
Charlotte La Posea Foundation
Ira M. Levenshon
Roger Levin
Edwin Levy
Janet Malamud
Neil Mangot
Stanley W. Marion
Isabel May
Erna Mayer
Medtronic
Medtronic Foundation
Alan B. Mirken
Alan B. & Barbara Mirken
Foundation
Manuel & Mercedes Mosteiro
Novartis Pharmaceuticals
Corporation
NPF Orange County Chapter
Jo Ann Pepper Oreffice
Paul F. Oreffice
The Oreffice Foundation
W. James Orovitz
The Parkinson Alliance
Parkinson Chapter of
Greater Pittsburgh
The Parkinson Council
Parkinson Disease Foundation
Parkinson Foundation of the
National Capital Area
Parkinson's Unity Walk
Vivienne Parness
Pharmacia Corporation
Roche Laboratories
Marion A. Roletti Foundation, Inc.
Norman Rothman
The Rothman Foundation
Harriet Rubens
Sam J. Sanfilipo
B. J. Shortridge
Sven Siemen

Alan M. Slewett
Nathan Slewett
Sheila Slewett
SmithKline Beecham
Donald Soffer
South Palm Beach County
Chapter of NPF
Southern Illinois University
Estelle Stern Spiegel
State of Florida
Stearns Weaver Miller Weissler
Alhadeff & Sitterson, P.A.
Senator Paul B. Steinberg
Martin Tuchman
Norma Gilbert Udall
University of Kansas Medical Center
Robert Van De Wetering
Jack Weiss
Wisconsin Parkinson Association
Bruce & Kathy Wisnicki
Mitchell Wolfson
Gladys Wollowick Foundation
Monty Yokel Charitable Lead Trust
Herbert C. Zemel, Esq.
The William Zimmerman
Foundation
Margot Zobel

NPF FOUNDERS

The Founders represent cumulative giving of \$50,000 to \$99,999. All of our Founders are recognized with a gift of an authentic, scientific microscope encased in glass. This is a symbol of our continuous quest to find the cause of and cure for Parkinson disease.

Allstate Giving Campaign
Carlos Arboleya
A. Jeffrey Barash
Harold Beck
Stephen & Mary Birch
Foundation, Inc.
The Braeside Foundation
Caruthers Foundation, Inc.
Harry Wayne Casey
J. Doreen Chadbourne
Colorado Parkinson
Foundation, Inc.
Community Health Charities of NY

Community Health Charities
of Pennsylvania
Community Health Charities
of Texas
Robert A. M. Coppenrath
Robert M. Cornfeld, D.M.D.
Ann Degraff
Selma Denburg
Diamond Creek Vineyards
Ralph & Barbara Edwards
Family Foundation
Gail Epstein
ESSAR Family Foundation
The Evenor-Armington Fund
Fabre Kramer Holdings, Inc.
Vain & Harry Fish Foundation, Inc.
Doree Fromberg
Ronald Galowich
Gladys Gelb
Martin J. Gelb
Irene Goldman
Dr. Moses & Beatrice
Goodman Fund
Carol Greenberg
Alice Greenberg Memorial
Philanthropic Fund
Jerry Haar
Edward F. Harris
Mel Harris
Hello Shops
Elmer Hurwitz
IBM Corporation
Lieba Ingber
Deane Jacques
John & Evelyn Kossak
Foundation, Inc.
Carol Landa
Michael L. Landa
William Landa
John H. Lewis
Abraham Lieberman, M.D.
Jerry Lindzon
Lois Marcus
Merck
David Meyer
Robert Mitchell
Michael Mulroy
National Voluntary Health

Calvin & Flavia Oak
Foundation Inc.
Parkinson Association
of South Dakota
Parkinson Education Group
Parkinson Foundation
of the Heartland
Paxson Communications
Corporation
Pfizer Inc
The Ridgefield Foundation
Billy Rose Foundation, Inc.
Quiet Harbor Trust Agency
Arthur Rosewall
Carolyn Roskin
The Roth Fund
SE Pennsylvania United Way
Savage Trichter Ink, Inc.
Lawrence Schine
Louella Shapiro
George Simon
John C. & Roberta E. Smith Trust
Carol Soffer
Rita Soffer
Somerset Pharmaceuticals Inc
Jerry & Emily Spiegel Family
Foundation
Ruby Stevens
Richard B. Stolley
Amancio Suarez
Betty Taylor
Phillip Traub
John Trust
Vanguard Charitable
Endowment Program
Harry Vermeer Family Foundation
Dennis C. Wallach
James H. Warsaw
Harry Weinberg Family
Foundation, Inc.
Michael L. & Antoinette H.
Wilkerson Charitable Remainder
Unitrust
Allan Yarkin
Philip Youtie
Isaac Zelcer

THE PRESIDENT'S SOCIETY

The President's Society represents cumulative giving of \$25,000 to \$49,999. The President's Society recognizes the philanthropic efforts of individuals, foundations, corporations and affiliate chapters.

Anonymous
Rene & Irene Abel
Acadia Pharmaceuticals
American Fence Corporation
Amgen
Eugene M. Bane Charitable Trust
Ronald Barnette
Virginia Barrett
Rhoda Bernstein
Stephen & Mary Birch
Foundation, Inc.
The Braeside Foundation
Daniel D. & Erhla Cantor
Chaikovsky Charitable Fund
Hannah S. and Samuel A. Cohn
Memorial Foundation
Community Foundation for
Palm Beach and Martin Counties
Community Foundation of
the National Capital Region
Community Health Charities
of Alabama, Inc.
Community Health Charities
of Georgia
Community Health Charities
of Kansas
Community Health Charities
of Maryland
Community Health Charities
of Massachusetts
Community Health Charities
of Missouri
Community Health Charities of
the National Capital Area
Community Health Charities
of New York
Community Health Charities
of Tennessee
Community Health Charities
of Virginia

Cortex Pharmaceuticals, Inc.
CSRA PD Support Group
M. Dalitz
Hedy Des Jardins
Stella Drullinger
Harry S. Dube Foundation
Pauline Dunning
Robert & Charlotte Dyment
Family Trust
Eisenhower Medical Center
Walter & Anita Farrell
Ruth Featherstone
FedEx Corporation
Stecia Feldman
Merrill Fenner
Fidelity Charitable Gift Fund
Harold Flutie
Rose Forman
Gaines Unitrust
Jacques Gale
Gardens Parkinson's Support Group
Georgetown University Hospital
Alvin Gibbs
GlaxoSmithKline
David B. Golub
Ana-Maria Fernandez Haar
Hollis Hall
Mary Hampton
Lawrence Hoffheimer
Ruth Hokanson
The Don A. Hunziker Family
Foundation, Inc.
J.A.M. Anonymous Foundation, Inc.
Jewish Communal Fund
S. Johns
Eleanor Kass
Walter Kirk
Robert Koch
Ronald Krancer
James Annenberg La Vea Charitable
Foundation
David Laventhol
Laurence W. Levine
Foundation, Inc.
Mastronardi Foundation
Robert Matthews
Mellon Private Trust Company
Merriman Family Foundation
Elizabeth Miedema

Nancy Mulheren
Anna Nalbandian
National Health Agencies
National Voluntary Health
Agencies of Ohio
Neurim Pharmaceuticals
Northern Trust Bank
Paul Novelty
The Ohio State University
Sylvia Orkin
Park Foundation, Inc.
Parkinson Association of Minnesota
Parkinson Association of
Northern California
Parkinson Association of
Southwest Florida, Inc.
Lowell W. Paxson
Peacock Foundation, Inc.
People Drug Store
The Pratt Family Foundation
Margot & Thomas J. Pritzker
Family Foundation
Albert Quentel
Mirta Reina
The Ridgefield Foundation
Emma Rovelli
Sacramento Area United Way
St. Joseph's Hospital and
Medical Center
Irwin Samuels
A.J. Schlossman Foundation Trust
Schwarz Pharma, Inc.
Elizabeth Scrivner
Erich Segal
William Shepherd
Irving S. Sherr
Lisa Shulman
Harry S. Sloane Foundation
Margaret Smartt
Gary Smolin
Joan Stanton
C. Stegink
Lucille Stephens
The Studley Family Foundation
Wayne E. Swanson
Brad Sympson
T.D. Waterhouse
Marjorie Tallman Educational
Foundation Trust

Vincent Tese
Teva Neuroscience
The Thoresen Foundation
Titan Pharmaceuticals, Inc.
United Way of Miami-Dade County
United Way of Southeastern
Pennsylvania
Alberto Vadia
Sarah Vanderweele
Wang Associates
H.E. and Helen R. Warren
Foundation
Wellness Health Pharmaceuticals
James B. Williams
Louis G. Zimmerman

THE GUARDIAN SOCIETY

The Guardian Society represents cumulative giving of \$10,000 to \$24,999. The Guardian Society recognizes the philanthropic efforts of individuals, foundations, corporations and affiliate chapters.

Acacia Charitable Foundation
Herbert Adair
Adorno & Zeder Community
Care Fund
AK Steel Foundation
Edward Allen
Allen & Company LLC
Don Allen Foundation
Rick Alterman
Jack & Sylvia Altman
Foundation, Inc.
The AME Foundation, Inc.
Associate Member Council
Athletes With Heart
Atlas Welding Boiler Repair
Juana Avila
Ruby Bacardi
Dorothy Ball
John E. & Nellie J. Bastien
Memorial Foundation
Baylor College of Medicine
Benevolent & Protective
Order of Elks
Moises Berezdivin
Norma Berman
Benjamin Bernstein

Ivalee Berry
 Thomas E. Blackburn
 Eugene Blankenship
 Joaquin Blaya
 Albert Blenderman, M.D.
 The T & M Bollt Family
 Foundation
 Jimmie Bonbright
 Alfred Borstein
 Braman Family Foundation, Inc.
 Lois Brounell
 Nina & Joe Brown
 The Brunetti Foundation
 Buehler Family Foundation
 Lottie Burch
 Burfeind Foundation
 Burgess Snyder Industries
 Franco Burini
 CT Management
 Jean Cadieux
 Mardelle Cagen
 The Callans Family Foundation
 Bernard Caplan
 Dorothy Cassett
 Cast North America Inc
 Rosa Castillo
 Chartwell Foundation
 Daniel Chiodo
 Coastal American Corporation
 Mary Cofrin
 The Manny & Ruthy Cohen
 Foundation, Inc.
 Toby Cohn
 James & Margaret Coleman
 George Collins
 The Community Foundation of
 Sarasota County
 Community Foundation for
 the Fox Valley Region
 Community Health Charities
 of Colorado
 Community Health Charities
 of New Jersey
 Community Health Charities
 of North Carolina
 Community Health Charities
 of Ohio
 Community Health Charities
 of South Carolina

Community Health Charities
 of Utah
 Community Health Charities
 of Washington
 Continental Co.
 Coopers & Lybrand
 Robert & Joanne Crown
 Income Charitable Fund
 D D Dunlap Companies
 Dade Community Foundation, Inc.
 Dears Foundation, Inc.
 Greg Decoteau
 Deloitte & Touche
 Angeline Dent
 Bill Desser
 Fred Diamond
 Roderick Dickinson
 F. Dixon
 Fred Doolittle
 Dupont De Nemours
 Dyson Foundation
 Eaton Foundation
 Jean Eder
 Eli Lilly
 Eljay Foundation for
 Parkinson Awareness, Inc.
 Equitable Holding
 Ross Evans
 Libby Fain
 Gerry Fantle
 Mary J. Fay
 Judith Feldman
 Ferkauf Foundation
 Robert P. Fetch
 Fidelity Charitable Gift Fund
 Dorothy Fink
 Fireman's Fund Insurance Company
 Robert Fiske
 Bernard J. Fogel, M.D.
 Arnold Frank
 The Harry and Flora D. Freund
 Memorial Foundation
 Friars National Association
 Foundation
 Alice E. Fulop
 Charles Ganz
 Gap Foundation Gift
 Match Program
 Genzyme Tissue Repair

Raymond Gertz
 Pauline Allen Gill Foundation
 Marilyn & Myers Girsh
 Isabelle Goldenson Association
 Arlene & Arnold Goldstein
 Family Foundation
 Lawrence Golub
 Rhoda Goodman
 Martha Gordon
 Gloria Gorelik
 Julianne Grabert
 Great Western Bank
 Greater Cincinatti Foundation
 Greater Miami Jewish Federation
 The Alan C. Greenberg
 Foundation, Inc.
 Reuben A. & Lizzie Grossman
 Foundation
 Laura Gruy
 HPC Incorporated
 Margaret Hahn
 Fred Hallman
 Stacey Halpern
 David Hamburger
 Sydney L. Hammer Living Trust
 Gary N. Handis
 Frances Handler
 Blanche Hanten
 Monness Hardt
 Michael Harkins
 Harmony Baptist Church
 Fran Harris
 Hawaii Parkinson Association
 Chapter of NPF
 The Healthfund of Minnesota
 Florence Hecht
 Monnica Heftler
 The Laura or Walter Hudson
 Foundation
 Susan Henry
 Robert Herzog
 Herbert Hess
 Hialeah Hospital
 William Hill
 Gordon Hoerauf
 James Holmes
 Daniel Holtz
 Dennis Honzay
 B. Hopper

David Horn
 Illinois Council of Voluntary
 Health Agencies
 Independent Charities of America
 Industrial Bowling Corporation
 Bill Ingram
 Barry Jackson
 Jewish Community Foundation
 of Metrowest
 Milton Jimenez
 Johnson & Johnson
 Charles Jones
 Donald and Sally Jones
 Robert C. Kagle
 Gabriel Kain
 The Kaltman Family Foundation
 Keenan Antiques
 Bernard Keeshan
 Martha McCarty Kimmerling
 Eugene C. Kincaid Living Trust
 John King
 Kingdor NPF Bahamas Chapter
 Elmer Kinnamon
 Kintera, Inc.
 Kitsap County United Way
 Lawrence & Arlene Klainer
 Mildred Klindworth
 Gesley Knickerbocker
 Harry Korman
 Irwin Kott
 Harry Kramer Memorial Fund
 Mysak Kravitz
 Rod Kvamme
 Lawrence County
 Parkinson's Association
 Bruce Layne
 Yvonne Lenart
 Sachiko M. Lenk
 Polly Annenberg Levee
 Charitable Trust
 A. S. Levendosky Living Trust
 Shayla Shabot Levy Foundation
 Michael and Kathy Lewis
 Douglas Liebhafsky
 Lorber Family Foundation
 Arthur Loux
 Robert Love
 Craig N. Lowe
 James Lyons

Marathon Sports
 Ruben Matz
 Bernard Mayers
 Manuel Medina
 Millicent Medvied
 Luis Mendoza
 Julia and Gilbert Merrill Foundation
 Sara S. Meyer
 Miami Jewish Home & Hospital
 for the Aged
 Microsoft Giving
 Campaign Program
 Gail Milhous
 Dora Miller
 Lester Miller
 Michael Miller
 Joseph Millimet
 Harvey Mininberg
 Nicholas Minnucci
 Robert Moffett
 Sarah Moreno
 Morgan Stanley UK Group
 Morrison, Brown,
 Argiz & Farra, LLP
 Mother Lode Parkinson Foundation
 Helen Murin Foundation
 G. Murray
 Stephen Muss Foundation
 Mylan Bertek Pharmaceuticals Inc.
 N.E. Kansas Parkinson Foundation
 National Philanthropic Trust
 National Voluntary Health
 of Arkansas
 National Voluntary Health
 of Colorado
 National Voluntary Health Illinois
 National Voluntary Health Michigan
 National Voluntary
 Health Pennsylvania
 The Niewig Foundation
 Rosalyn Newman Foundation
 Julia Newton
 North Carolina National
 Voluntary Health
 North Ridge Medical Center
 Northwest Pipe Company
 Morton Nuefield Foundation
 Onan Family Foundation
 Aggi Oschin

Ostern Foundation
 The Oxley Foundation
 Pacific Coast Cutting
 Horse Association
 The Beatrix & Martin
 Padway Foundation
 Palm Desert Travel
 Chris Papazickos
 Parkinson's Support Group
 of Upstate NY, Inc.
 Golda Peterson
 Lanny Peterson
 Pipevine, Inc.
 Martin Polonsky
 John Pope
 Victor Posner
 George Powell
 R Foundation
 Margaret Rella
 Judith Richard
 Richard Riddell
 Riverside Medical Foundation
 Roseland Post #49, American
 Legion Corporation
 Cecil Rosen Foundation
 Rosenthal Foundation
 Hubert Rosomoff
 Martin Ross
 Regina Rubenstein
 John Russo
 Thomas A. Ryan
 Eric Schaffer
 Jeffrey H. Schecter
 Meryl Schwartz
 Sherwood Schwartz
 The Schwarz Pharma Foundation
 Robert Schweitzer
 Joelle E. Scott
 Harriette Secrest
 Alan L. Seely
 Karen Segal Foundation
 Kimberly & Matthew Seidman
 Patricia Shapiro
 Everett Sharp
 Donald A. & Virginia D. Sillers
 Leon Simkins
 James Sloss
 Edward W. Smith Jr. Foundation
 Smurfit Latin America

Solomon Family Foundation
Linda Sotnick
Southern Wine & Spirits
Dale Speck
Fritz Sperling
Daniel J. Spiegel Family Foundation
Sam Spiegel Foundation
Sprint
John Spurlino
Albert Staton
Norman Stein
Gary Stevens
W. L. Strelow
Franklin Surnamer
Nancy Swenson
Marian L. Tansky
Melvin S. Taub
Avis Taylor
Tenet
Nina N. Thayer
Bill Torrance

Jacqueline and Robert H. Traurig
Tristar Martial Arts Academy, Inc.
Tuchman Foundation
Ueberroth Family Foundation
Union Planters Bank
United Way of the Bay Area
United Way of Kitsap County
United Way of Tri-State
University of Colorado
University of Miami Leonard M.
Miller School of Medicine
University of Pittsburgh
Upstate New York Chapter of NPF
Jay & Betty Van Andel Foundation
Helen Vanderhoff
Jenni Vigar
Arleen Wahrman
James H. Warsaw Foundation to
Cure Parkinson's Disease at The
Giving Back Fund
Watson Laboratories

Marvin Weber
William Weiner
Bernice Weinstein
Millicent Weinstein
Irving J. Weiss Revocable
Living Trust
Dotha Welbourn
Jean L. West
Dan C. Whitehurst
The Dr. Jack Widrich
Foundation, Inc.
S. Z. Wiener
Edwin Willinger Charitable Trust
Richard Worsley
John Wright
Wynanda Ltd
Clarence Youngren
Tanya Zallea
Gregg Zaun Charitable Foundation



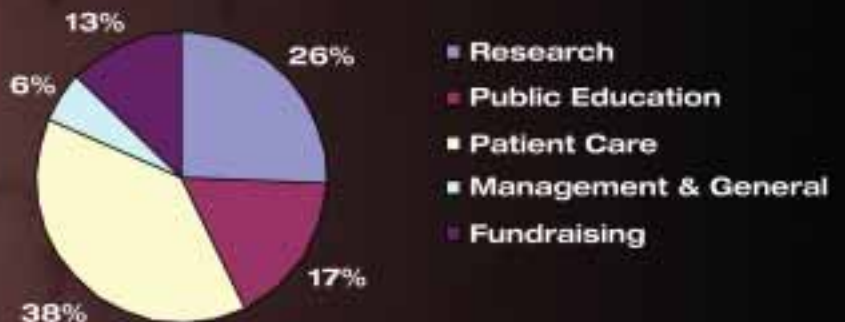
Financial Report

The following pages were extracted from the audited financial report of the National Parkinson Foundation. The complete accompanying notes are an integral part of those financial statements. A copy of the full audit report is available from the office of the Controller, Pamela Olmo, 1501 N.W. 9th Avenue, Miami, FL 33136.



As illustrated by the chart, National Parkinson Foundation directs more than 80% of its spending on areas related to its mission (research, patient care, and public education), and less than 20% on fundraising and management and general combined.

NPF 2006 expenses by Category



NATIONAL PARKINSON FOUNDATION, INC.
CONSOLIDATED STATEMENTS OF FINANCIAL POSITION
JUNE 30,

ASSETS	2006	2005
Cash and cash equivalents	\$1,220,974	\$3,748,854
Receivables:		
Pledges, net of allowance and unamortized discount of \$343,477 and \$342,392 for 2006 and 2005, respectively	388,028	547,198
Charitable trusts	240,205	512,534
Estate receivable	1,000,000	-
Other receivables	262,036	359,370
Prepaid expenses and other assets	86,088	56,151
Investments	25,392,655	25,582,636
Property and equipment, net	<u>606,658</u>	<u>732,967</u>
TOTAL ASSETS	<u>\$29,196,644</u>	<u>\$31,539,710</u>
LIABILITIES AND NET ASSETS		
Accounts payable and accrued expenses	\$376,400	\$400,369
Grants payable (Note 5)	87,225	565,229
Annuities payable	<u>846,126</u>	<u>881,027</u>
TOTAL LIABILITIES	<u>1,309,751</u>	<u>1,846,625</u>
COMMITMENTS AND CONTINGENCIES		
Net assets:		
Unrestricted	21,695,143	23,738,616
Temporarily restricted	4,414,360	4,177,079
Permanently restricted	<u>1,777,390</u>	<u>1,777,390</u>
TOTAL NET ASSETS	<u>27,886,893</u>	<u>29,693,085</u>
TOTAL LIABILITIES AND NET ASSETS	<u>\$29,196,644</u>	<u>\$31,539,710</u>

NATIONAL PARKINSON FOUNDATION, INC.
CONSOLIDATED STATEMENT OF ACTIVITIES
YEAR ENDED JUNE 30, 2006

	<u>Unrestricted</u>	<u>Temporarily Restricted</u>	<u>Permanently Restricted</u>	<u>Total</u>
Revenue and public support:				
Contributions:				
Private individuals, corporations and private foundations	\$ 4,682,467	\$ 717,520	\$ -	\$ 5,399,987
Legacies and bequests	2,178,945	380,082	-	2,559,027
Public support	-	147,494	-	147,494
Special events (less direct costs of \$200,458)	397,666	-	-	397,666
In-kind rent income	274,740	-	-	274,740
Interest income	710,910	68,647	-	779,557
Net appreciation on investments	974,307	(59,038)	-	915,269
Net assets released from restrictions	1,017,424	(1,017,424)	-	-
	<u>10,236,459</u>	<u>237,281</u>	<u>-</u>	<u>10,473,740</u>
Total revenue and public support				
Expenses and losses:				
Program services:				
Research (Note 5)	3,107,199	-	-	3,107,199
Public education	2,086,782	-	-	2,086,782
Patient care services	4,698,506	-	-	4,698,506
	<u>9,892,487</u>	<u>-</u>	<u>-</u>	<u>9,892,487</u>
Total program services				
Supporting services:				
Management and general	723,135	-	-	723,135
Fundraising	1,543,635	-	-	1,543,635
	<u>2,266,770</u>	<u>-</u>	<u>-</u>	<u>2,266,770</u>
Total support services				
Total expenses	12,159,257			12,159,257
Change in value of annuities and split interest agreements	120,675	-	-	120,675
Total expenses and losses	<u>12,279,932</u>	<u>-</u>	<u>-</u>	<u>12,279,932</u>
Change in net assets	(2,043,473)	237,281	-	(1,806,192)
Net assets, beginning of year	<u>23,738,616</u>	<u>4,177,079</u>	<u>1,777,390</u>	<u>29,693,085</u>
Net assets, end of year	<u>\$21,695,143</u>	<u>\$ 4,414,360</u>	<u>\$ 1,777,390</u>	<u>\$ 27,886,893</u>

NATIONAL PARKINSON FOUNDATION, INC.

CONSOLIDATED STATEMENT OF ACTIVITIES

YEAR ENDED JUNE 30, 2005

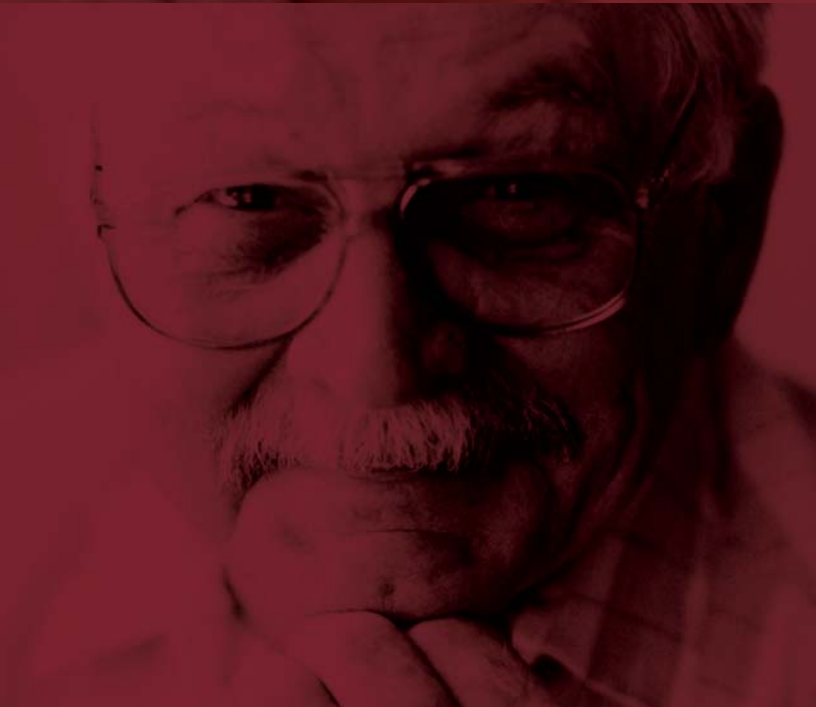
	<u>Unrestricted</u>	<u>Temporarily Restricted</u>	<u>Permanently Restricted</u>	<u>Total</u>
Revenue and public support:				
Contributions:				
Private individuals, corporations and private foundations	\$ 4,296,405	\$ 747,195	\$ -	\$ 5,043,600
Legacies and bequests	2,084,550	1,225,163	-	3,309,713
Public support	-	161,155	-	161,155
Special events (less direct costs of \$262,380)	260,615	40,350	-	300,965
In-kind rent income	288,726	-	-	288,726
Interest income	750,861	61,659	-	812,520
Net appreciation on investments	805,834	207,156	-	1,012,990
Net assets released from restrictions	736,179	(736,179)	-	-
	<u>9,223,170</u>	<u>1,706,499</u>	<u>-</u>	<u>10,929,669</u>
Total revenue and public support				
Expenses and losses:				
Program services:				
Research (Note 5)	1,733,656	-	-	1,733,656
Public education	2,074,132	-	-	2,074,132
Patient care services	4,095,108	-	-	4,095,108
	<u>7,902,896</u>	<u>-</u>	<u>-</u>	<u>7,902,896</u>
Total program services				
Supporting services:				
Management and general	795,865	-	-	795,865
Fundraising	1,457,517	-	-	1,457,517
	<u>2,253,382</u>	<u>-</u>	<u>-</u>	<u>2,253,382</u>
Total support services				
Total expenses	10,156,278	-	-	10,156,278
Change in value of annuities and split interest agreements	(166,947)	-	-	(166,947)
Total expenses and losses	<u>9,989,331</u>	<u>-</u>	<u>-</u>	<u>9,989,331</u>
Change in net assets from continuing operations	(766,161)	1,706,499	-	940,338
Loss due to discontinued operations (Note 1)	(216,754)	-	-	(216,754)
Change in net assets	(982,915)	1,706,499	-	723,584
Net assets, beginning of year	<u>24,721,531</u>	<u>2,470,580</u>	<u>1,777,390</u>	<u>28,969,501</u>
Net assets, end of year	<u>\$23,738,616</u>	<u>\$ 4,177,079</u>	<u>\$ 1,777,390</u>	<u>\$ 29,693,085</u>

NATIONAL PARKINSON FOUNDATION, INC.
CONSOLIDATED STATEMENT OF FUNCTIONAL EXPENSES
YEAR ENDED JUNE 30, 2006

	Research	Public Education	Patient Care Services	Management and General	Fundraising	Totals
FUNCTIONAL EXPENSES						
Salaries	\$ 123,487	\$ 410,346	\$ 448,380	\$ 292,359	\$ 456,941	\$ 1,731,513
Payroll taxes and benefits	27,481	109,010	80,229	98,940	119,945	435,605
Total salaries and benefits	150,968	519,356	528,609	391,299	576,886	2,167,118
Grants	2,733,906	321,616	3,384,270	-	-	6,439,792
Research symposium	-	12,467	9,603	1,865	228	24,163
Legal and accounting	-	-	241	75,013	4,381	79,635
Outside services	9,211	362,244	264,992	231	461,894	1,098,572
Printing and publications	3,983	340,007	25,198	7,609	20,446	397,243
Public relations	-	51,500	4,364	300	6,879	63,043
Postage, freight & courier services	873	96,327	46,095	4,222	251,509	399,026
Food, beverages and meetings	17,732	91,374	52,963	16,892	113	179,074
Telephone	4,698	16,508	12,613	17,832	11,968	63,619
Repairs and maintenance	416	1,111	416	48,600	1,702	52,245
Office supplies	5,103	3,340	6,659	12,000	29,340	56,442
General insurance	18,690	31,151	43,626	15,226	24,921	133,614
Interest paid to annuitants	-	-	-	74,977	-	74,977
Travel & transportation	85,900	121,038	189,520	8,540	23,456	428,454
Lease and rentals	52,930	81,237	84,508	30,059	66,729	315,463
Bank and brokerage fees	-	-	-	3,642	19,075	22,717
Miscellaneous	-	3,764	1,806	-	4,698	10,268
Subtotal	2,933,442	1,533,684	4,126,874	317,008	927,339	9,838,347
Building & equipment depreciation	22,789	33,742	43,023	14,828	39,410	153,792
TOTAL FUNCTIONAL EXPENSES	<u>\$3,107,199</u>	<u>\$2,086,782</u>	<u>\$4,698,506</u>	<u>\$723,135</u>	<u>\$1,543,635</u>	<u>\$12,159,257</u>

NATIONAL PARKINSON FOUNDATION, INC.
CONSOLIDATED STATEMENT OF FUNCTIONAL EXPENSES
YEAR ENDED JUNE 30, 2005

	Research	Public Education	Patient Care Services	Management and General	Fundraising	Totals
FUNCTIONAL EXPENSES						
Salaries	\$ 106,821	\$ 434,457	\$ 590,968	\$ 282,590	\$ 421,357	\$ 1,836,193
Payroll taxes and benefits	23,045	94,521	110,059	76,437	101,896	405,958
Total salaries and benefits	129,866	528,978	701,027	359,027	523,253	2,242,151
Grants	1,420,054	255,629	2,511,911	-	-	4,187,594
Research symposium	21,139	4,076	15,906	617	3,540	45,278
Legal and accounting	-	-	81,877	52,577	27,016	161,470
Outside services	4,329	245,077	206,836	1,803	444,564	902,609
Respite care	-	-	22,629	-	-	22,629
Printing and publications	2,421	568,399	9,816	5,171	14,515	600,322
Public relations	350	100	-	485	4,902	5,837
Postage, freight & courier services	2,031	220,517	43,102	7,196	262,383	535,229
Food, beverages and meetings	7,472	3,170	79,010	16,851	734	107,237
Telephone	5,597	15,513	16,631	11,420	12,815	61,976
Repairs and maintenance	66	1,176	102	46,602	1,157	49,103
Office supplies	410	6,533	5,346	17,530	20,201	50,020
General insurance	25	408	22,662	113,067	-	136,162
Interest paid to annuitants	-	-	-	68,197	-	68,197
Travel & transportation	30,985	114,647	247,587	15,158	19,847	428,224
Lease and rentals	48,332	86,012	98,546	36,449	69,410	338,749
Bank and brokerage fees	365	365	365	22,286	4,484	27,865
Miscellaneous	2,213	602	-	2,730	14,177	19,722
Subtotal	1,545,789	1,522,224	3,362,326	418,139	899,745	7,748,223
Building & equipment depreciation	58,001	22,930	31,755	15,917	34,519	163,122
Bad debt	-	-	-	2,782	-	2,782
TOTAL FUNCTIONAL EXPENSES	\$1,733,656	\$2,074,132	\$4,095,108	\$ 795,865	\$ 1,457,517	\$10,156,278





NATIONAL PARKINSON FOUNDATION

1501 NW 9th Avenue / Bob Hope Road, Miami, Florida 33136-1494
Telephone 305.243.6666 Toll Free 800.327.4545 Fax 305.243.5595
Email: contact@parkinson.org Visit us online: www.parkinson.org