



2023 Annual Report



Parkinson's
Foundation

Accelerating
HOPE

OUR MISSION

The Parkinson's Foundation makes life better for people with Parkinson's disease by improving care and advancing research toward a cure. In everything we do, we build on the energy, experience and passion of our global Parkinson's community.

\$24M

invested in Parkinson's research and clinical care in 2023.



Board member Christina Weaver Jackson (left) alongside Halston Mathis (second from right) at the Move & Mingle event in Washington, DC, on March 16, 2023.



On January 30, 2023, 73 people attended our Promotores de Salud day-long training workshop on Parkinson's, research and resources in Chicago, IL.



On September 9, 2023, our Southwest Chapter hosted PD 101 in Tucson, AZ. More than 100 attendees heard from Cynthia Reed, MD, of the Parkinson Wellness Clinic and enjoyed a movement break with PWR!



In 2023, we dedicated \$24 million to Parkinson's research and clinical care. We are seeing unprecedented momentum in our global genetics study, *PD GENERation: Mapping the Future of Parkinson's Disease*. We have already provided genetic testing and counseling to 13,600 participants, at no cost, and this pace will continue in the year ahead as we expand to new areas.

We published an eye-opening study this year about critical gaps and disparities in access to Parkinson's disease (PD) care in the U.S. One of the key findings is that only 9% of people with Parkinson's received care from movement disorders specialists, expertly trained neurologists who can recognize PD's distinct nuances and tailor treatments to each patient. These findings underscore the need for greater outreach to general neurologists and other providers to better understand their needs in caring for people with Parkinson's.

Two years ago, we launched our Reach Further fundraising campaign to invest an additional \$30 million to accelerate progress on Parkinson's research, improve care and increase access to quality-of-life programs. We are pleased to share that we have raised more than \$16 million and are on track to meet our goal well before 2025 thanks to our many generous donors, including the Krupp Smith Family.

"We were lucky our dad had access to great care, support and educational resources. By supporting the Parkinson's Foundation, we are expanding access to care, supporting research and honoring our parents' legacy," said Bobby Smith and Gary Smith, Jr. who honored their late father, Gary Smith Sr., with a gift to the Reach Further campaign.

I think you will see for yourself in this report that we are accelerating our efforts in research, care and education. Thank you to the clinicians who care for people with Parkinson's disease every day, to the scientists who provide hope for breakthroughs and a better future, to our volunteers for their energy and tireless efforts, and to our donors for their faithful support of our mission.

Sincerely,

John L. Lehr
President and Chief Executive Officer



The cast of the Broadway play *A Beautiful Noise* presented John Lehr with a check for \$500,000 on April 11, 2023, to help make life better for people with PD.



Last year our People with Parkinson's Advisory Council met in Miami, FL, to help guide Foundation priorities and programs.



Our Carolinas Chapter premier golfing event, *Playing for Parkinson's*, at Spring Island, SC, raised \$325,000 and brought together local individuals and businesses.



ACCELERATING >>>> RESEARCH



\$449 million invested in Parkinson's research and clinical care since 1957.



678 scientists received Parkinson's Foundation funding since 2010.



13,600 people with Parkinson's enrolled in PD GENERation, to receive genetic testing and counseling at no cost.

Although an estimated 10 million people live with Parkinson's globally, research remains severely underfunded.

At the Parkinson's Foundation, we are committed to closing the funding gaps in research by providing essential grants, furthering drug discovery, and advancing our global genetics study.

A recent Parkinson's Foundation study found that nearly 90,000 people are diagnosed with Parkinson's every year in the U.S. — this number is 50% higher than previously believed. To understand Parkinson's and how to better help people, we need to know how many people live with this disease, which is why studies like this one are imperative.

In 2023, we awarded **\$3.5 million in research grants to 32 scientists.** Through grants and fellowships, we fund scientists who are devoted to deciphering this disease and finding new ways to slow its progression. We back high-risk research that typically does not receive federal funding, so that we can advance the research that leads to high rewards.

We invested \$3 million toward the Parkinson's Virtual Biotech, in partnership with the Parkinson's UK. This initiative is funding the development of 13 potential drugs that either address symptoms or aim to slow, stop, or prevent the disease altogether, getting us **closer to delivering life-changing treatments in years, not decades.**

Right now, pharmaceutical companies are developing drugs that slow PD through targeting specific genetic mutations — some are already recruiting for clinical trials. However, it can take years to fill these trials. Not only does *PD GENERation: Mapping the Future of Parkinson's Disease* help accelerate clinical trials, and their results, but this data is immediately shared with researchers to develop a greater understanding of the genetic link to Parkinson's.

In 2023, PD GENERation:

- Provided genetic testing and counseling to 13,600 people with Parkinson's, at no cost.
- Found that up to 12.7% of people with Parkinson's have a genetic link to the disease.
- Dedicated efforts to recruiting diverse applicants and reaching priority populations.

Our research fellowships and early career awards support and train young investigators. The Parkinson's Foundation Launch Award enables postdoctoral researchers to complete needed mentored training and transition promptly to independent research careers in Parkinson's.

“*The Parkinson's Foundation Launch Award will have a profound impact on my career and abilities to continue Parkinson's research. Opening a new laboratory as an early career scientist will be an exciting adventure. I will face many challenges, but this grant will greatly facilitate my success. Thanks to all Parkinson's Foundation supporters for helping us move the research forward.*”



Aurélie de Rus Jacquet, PhD
Laval University, Quebec, Canada
Two-time Parkinson's Foundation Research Grantee

While Parkinson's is complex, our research strategy is simple — accelerate Parkinson's research on every level.

Learn more at [Parkinson.org/Research](https://www.parkinson.org/Research).



ACCELERATING CARE



11,063 emails sent to people in the PD community with resources and referrals from our Helpline in 2023.



8 new specialized PD centers joined our Global Care Network in 2023, with **7** in the U.S. and our first-ever in Japan.



9,000+ credits given across **12** health professional disciplines through our online PD courses in the Learning Lab.

Regularly seeing a neurologist can improve the lives of thousands of people with Parkinson's disease each year.

Our recent care access study, based on Medicare data, found that 50% of people with Parkinson's see a general neurologist. This study serves as our blueprint for improving access to PD care.

We are focused on **reaching people where they are most likely to receive care** and the professionals who provide it. We are amping disease-specific training, resources and collaborating with community partners. This brings us closer to improving access to care across all demographic and population groups.

To bring Parkinson's care to more people, we designate medical centers that know how to treat this complicated disease. These centers utilize a specialized team-based approach and provide community outreach. In 2023, we designated eight new centers as part of our Global Care Network, with the first-ever designations in Wisconsin and Washington, and the country of Japan.

In 2023 we expanded our network to include Community Partners in Parkinson's Care, a membership program for senior living communities and home care agencies. Through this program, more than 70 sites have staff trained in providing Parkinson's care.

Even with an aging population and Parkinson's on the rise, most healthcare professionals do not receive in-depth Parkinson's care training. With support from the CVS Health Foundation, we launched a new Education Series for Community Providers — an accredited free series of online courses designed to improve treatment and outcomes for people with Parkinson's.

From designating care centers to offering courses for healthcare professionals and the Parkinson's community, we believe in helping everyone understand the best-practices in Parkinson's care. All of our tools are designed to empower people with Parkinson's to **advocate for the care that will lead to a better quality of life.**

When people with Parkinson's visit one of our Global Care Network centers, they can expect high-quality care from professionals who know the latest in treatments and research. Expanding this network is just one way we are increasing access to care.

“*The Stanford Movement Disorders Center is deeply honored to be designated as a Parkinson's Foundation Center of Excellence. Through patient care, education and research, our providers and staff embrace the Foundation's mission to make life better for people with Parkinson's.*”



Kathleen L. Poston, MD, MS
Edward F. and Irene Thiele
Pimley Professor in Neurology
and Chief of Movement Disorders
at Stanford University

Explore how we are accelerating access to Parkinson's care at [Parkinson.org/FindingCare](https://www.parkinson.org/FindingCare).



ACCELERATING >>>> EDUCATION



Nearly **\$1 million** awarded in community grants benefiting Parkinson's programs across **35** states.



123,085 people registered for in-person and virtual PD events — reaching **42** countries and **50** U.S. states.



81,060 educational books and **386,200** fact sheets distributed.

Learning to live well with Parkinson's disease is an ongoing endeavor, which is why our resources and events are designed to empower those living with this disease, care partners and healthcare professionals.

Ensuring **diversity and inclusivity in Parkinson's research** is critical to accelerating breakthroughs toward a cure. In 2023, we partnered with Morehouse School of Medicine to expand genetic research in the Black community, making Morehouse the first historically Black institution of medicine to become a PD GENERation research site. Through PD GENERation, we make no-cost genetic testing and counseling accessible to everyone with PD. This includes local education opportunities, including our in-person research advocate training in Atlanta, GA, attended by 33 advocates from the Black community.

With 63.6 million people in the U.S. of Hispanic and Latino origin (according to the U.S. Census Bureau), we are dedicated to reaching the Spanish-speaking Parkinson's community. We launched more than 50

new Spanish pages on [Parkinson.org](https://www.parkinson.org) and created the Parkinson's Foundation Spanish Advisory Group to help us identify educational gaps and design educational programs for healthcare professionals. To provide peer-to-peer education and support for the Hispanic community, we hosted four Promotores de Salud training workshops with 127 attendees. Our PD GENERation genetics study also extends to the Spanish-speaking community, providing genetic testing and counseling to **1,060+ Latino participants**, in English and Spanish.

Access to information is vital for people living with Parkinson's, and those who love them. We funded **71 community grants across 35 states** — from local Parkinson's non-contact boxing classes to support groups. We also hosted **196** national and community-based education programs with **123,085 registrations**. Every one of our programs and events are designed to fill an unmet need for the Parkinson's community.

There is an unprecedented need for community-related programs that benefit people with Parkinson's and their care partners. From exercise classes to wellness events, our community grants aim to further the health, wellness and education of people with Parkinson's across the U.S.

“*The support we have received from the Parkinson's Foundation for our What's Up, Doc? program has enabled us to have high touch opportunities with people in the first year following a diagnosis. This program brings together the newly diagnosed in the local community to get them involved. Early intervention, education and inclusion in our community will enable those who are newly diagnosed to live a better life with the disease.*”



Gil Kim
Parkinson's Care Partner,
Parkinson's Foundation
Community Grant Recipient,
Member of People with Parkinson's
Advisory Council

Accelerate your Parkinson's community and find empowering resources and events at [Parkinson.org/Resources](https://www.parkinson.org/Resources).

2023

in Numbers



302,582 people

received vital counseling from specialists on our toll-free Helpline, 1-800-4PD-INFO since 1998.

204,440 people

with Parkinson's treated in our Global Care Network — the largest global network of medical centers that specialize in Parkinson's care.

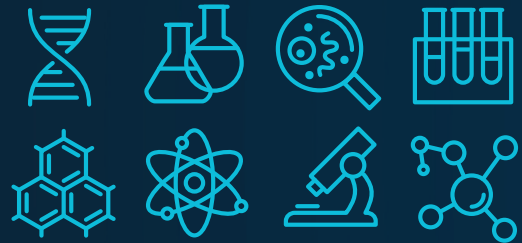
3,150 volunteers

helped us make life better for people with PD across all 17 of our chapters.



\$449 million

invested in Parkinson's research and clinical care since 1957.



678 scientists

received Parkinson's Foundation funding since 2010.



community-based programs

have received \$10.4 million in funding since 2011.

50



new webpages

with critical information about Parkinson's on [Parkinson.org/Espanol](https://www.parkinson.org/Espanol).



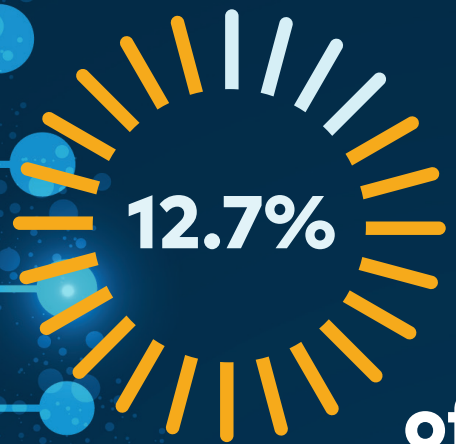
6 million

people visited [Parkinson.org](https://www.parkinson.org), the go-to online Parkinson's resource, in 2023.



117,000
podcast
episodes

downloaded in English and Spanish, in 2023

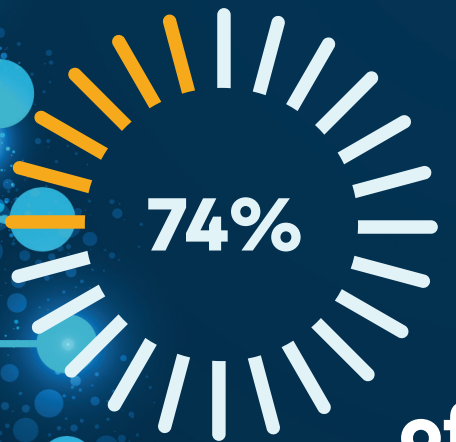


of
participants

have a genetic link to PD (much higher than the originally believed 5-10%).

13,600
people with
Parkinson's

received a genetic test and counseling session through our Parkinson's study, PD GENERation.



of
participants

have never participated in a PD research study prior to PD GENERation, opening doors for people to join other research studies and advance the field.

Honor Roll



The Parkinson's Foundation gratefully acknowledges all donors. Supporters who donated \$25,000 or more between July 1, 2022 and

June 30, 2023 are listed below. Our generous donors allow us to further our mission to make life better for people with Parkinson's and accelerate research toward a cure.

Thank you for your dedicated support.

\$1 Million and Above

Sharron and Joseph Ashby
Hubert Fund of the Community
Foundation of Broward*
Bill and Amy Gurley
William K. and Naomi Kramer
Foundation*
Krupp Smith Family Foundation
Estate of Anthony Zaninovich

\$500,000-\$999,999

Anonymous Donor
The Applebaum Foundation
Mr. and Mrs. J. Gordon
Beckham, Jr.*
Tom and Marcia Mondavi
Borger Family*
Estate of Marie Ciaiola
Estate of Sandra L. Daigneaux
Trust of Norton M. Luger

Ethel A. Schmidt Charitable
Remainder Trust
Sherr and Nevard Families
Simone Charitable Foundation, Inc.
Robert W. Woodruff Foundation

\$250,000-\$499,999

ACADIA Pharmaceuticals, Inc.
Amneal Specialty
Pharmaceuticals
Carl & Mary Ann Berg Charitable
Remainder Unitrust
Biogen, Inc.
The Bobo Living Trust
CVS Health Foundation
Dunn Family*
Kyowa Kirin
Estate of Pauline M. LeComte
Wesley G. McCain and
Noreene Storrie

Estate of Shirley
McCormick Ayers
The William L. Richter
Family Foundation
Edmond J. Safra
Philanthropic Foundation
Supernus
Sutter Health
Estate of Margaret M. Tennant
Trust of Mozelle Thurman

\$100,000-\$249,999

AbbVie, Inc.
Mona and Andy Albert*
Allen Patterson Builders
Anonymous Donor
The Atmos Foundation
Estate of Maureen
Elizabeth Blades
Boston Scientific Corporation
Dan Campbell*
Estate of Krista J. Cheslak
R & D Cristina Charitable
Foundation
William K. Engel
Fairchild Martindale Foundation
Mr. and Mrs. Bryan Fields
Rollin M. Gerstacker Foundation*
Thomas Alby Graves Charitable
Remainder Unitrust
Estate of Martha J. Gross
Estate of Hatsue Gunter
Bannus B. and Cecily K. Hudson
Mr. and Mrs. Richard J. Kastner*
Anne Lamond

Estate of Christopher H. Lembcke
Light of Day Foundation, Inc.
Medtronic
Sandra Milken
William and Amy Moler*
Howard and Ginger Morgan*
Parkinson's Unity Walk
Josh and Melissa Raskin*
Estate of Mary S. Rawlings
Adam Riemer
Estate of Donald T. and
Patricia A. Savage
Seed for Success Foundation
Shirley Ryan Ability Lab
Estate of Myrna B. Shure
Glen and Susan Warren
The Wasily Family Foundation
Patricia and Leon Westbrock
World Parkinson Coalition, Inc.

\$50,000-\$99,999

Abbott Laboratories
ACORDA Therapeutics, Inc.
Anonymous Donors
Avion Pharmaceuticals, LLC
Estate of Jules J. Bingham
The Margaret M. Bloomfield
Family Foundation
Estate of Thomas Brown
Jonathan and Rae Corr Family
Foundation
Nancy Dehmlow*
The Dubin Family*
Gary and Lea Anne Dunton*
Estate of Valerie J. Elster

REACH FURTHER

Year Two Update

Halfway into our Reach Further campaign, we have received 6,611 donations that help us advance Parkinson's research, improve care and increase access to quality-of-life programs. Funds raised in 2023 allowed us to expand our genetics study, PD GENERation, invest in drug discovery and development through the Parkinson's Virtual Biotech, fund community programs and expand our Global Care Network. **Thank you to our generous supporters!**

Help us reach further at Parkinson.org/Reach.



\$14.4M
RAISED



6,611
DONORS



48%
COMPLETED

Ross S. Evans
 Fimberg-Baird Living Trust
 Don and Lorraine Freeberg Foundation
 Estate of Duane Gartner
 Genentech, Inc. Member of the Roche Group
 Stephanie Goldman Rosen and Steven Rosen
 Donald G. Gruett Revocable Trust
 The Jack and Virginia Guthrie Charitable Remainder Unitrust
 Judy and Ponder Harrison
 Estate of Kathleen B. Heaton
 The Eleanor M. and Herbert D. Katz Family Foundation, Inc.*
 Mr. and Mrs. Michael Keiser Donor Advised Fund
 Donald and Marilyn Keough Foundation
 Alan M. Krassner Fund of the Hawai'i Community Foundation
 Margaret D. Lienemann Charitable Trust
 Frederick and Magdalene Liguori
 Estate of Jane E. Lindsay
 Ro and Tom Manak*
 Musa and Tom Mayer Charitable Fund
 Trust of Daniel R. McGreevy
 Merz Therapeutics
 Estate of Robert L. Miller
 Donald Moylan & Joan Moylan Living Trust
 Paul and Marcy Nathan
 Neurocrine Biosciences, Inc.

Estate of Carolyn Sue Nicodemus Northwestern Medicine
 Prevail Therapeutics, A Wholly Owned Subsidiary of Eli Lilly and Company
 Reed Family Foundation
 Estate of Arthur Sabatini, Jr.
 Sage Therapeutics, Inc.
 Estate of Sara M. Schoppenhorst
 Estate of Shirley S. Schwartz
 The Smith Family Foundation
 Sunovion Pharmaceuticals Inc.
 Sustainable Futures Fund
 Stephen and Sherry Tarnok*
 Estate of Mary L. Weller
 Steve and Cindy Wolfe
 Joseph A. Yuppa

\$25,000-\$49,999

Anonymous Donors
 Atherton Family Foundation
 The Batchelor Foundation, Inc.
 Jane H. Berkold Parkinson Fund, a fund of Collaboratory
 John D. and Crystal Beuerlein
 Dr. Robert and Mrs. Marianne Bialas
 Broadway Cares/Equity Fights AIDS, Inc.
 Jane R. Cahn
 Andrew Cannella
 Capistrant Parkinson's Foundation Fund
 Mr. and Mrs. Robert A. Carpenter, Jr.
 Estate of Ada Anne Chirles

Mr. and Mrs. James G. Dinan
 Edward Jones
 Epic Charitable Fund
 Robert Eittleman Revocable Trust
 The Sam J. Frankino Foundation
 Estate of Joanne E. Froshiesar
 Estate of Connie Giampietro
 Gerald Z. Gibian
 The Lillian Goldman Charitable Trust
 Jerry Haar
 Kirk and Jen Gutekunst*
 Habersham Land Company
 The Don A. Hunziker Memorial Foundation, Inc.
 Kay Family Foundation, Inc.
 Christian Kleinerman
 Ronald J. Kuhn Trust
 The Jean and E. Floyd Kvamme Foundation
 Lift Works, Inc.
 Delia McCulloch
 Charlotte and Jim Monhart*
 Susan Munzer
 Tamra and Dan Novak*
 Maria and Rance Murray
 Jo Ann and Paul Oreffice
 Patient Access Network Foundation
 Patient Centered Outcomes Research Institute (PCORI)
 PENNYMAC
 Right at Home, LLC
 The Fan Fox and Leslie R. Samuels Foundation, Inc.

Neal and Sherrie Savage Family Foundation
 The Scarlett Family Foundation
 Estate of Jane M. Schaaf
 Carl S. Schneider
 Fred and Nancy Schumacher
 Dr. Vilasini Shanbhag*
 Eddie and Jo Allison Smith Family Foundation
 Estate of Kathleen A. Steinwehr
 William Harris and Andrea Sussman*
 Daniel A. Swiglo
 Estate of Henry P. Thelen
 Carroll M. Thomas
 Luther G. Tweeten
 Estate of Loren K. Van Der Slik
 Ray J. Waldo and Dolores M. Waldo Revocable Living Trust
 Walmart Foundation
 Michael and Julie Waterstone*
 David and Pamela Waud*
 Dr. Karen Weiss Fisher and Jeff Fisher*
 James R. Welty
 Anne Wojcicki Foundation
 Yonkers Contracting Company, Inc.
 Sherwin and Sheri Zuckerman

**denotes multi-year pledge donor*

NATIONAL CORPORATE SPONSORS

The Parkinson's Foundation gratefully acknowledges our national corporate sponsors who actively support mission-critical programs and research initiatives.

Amneal Specialty Pharmaceuticals
Kyowa Kirin
Supernus
ACADIA Pharmaceuticals, Inc.
CVS Health Foundation
Biogen, Inc.

Boston Scientific Corporation
AbbVie
Medtronic
Abbott Laboratories
Merz Therapeutics
Avion Pharmaceuticals, LLC
ACORDA Therapeutics
Sunovion Pharmaceuticals, Inc.
Neurocrine Biosciences, Inc.
Genentech Inc., Member of the Roche Group
Prevail Therapeutics
Sage Therapeutics
Right At Home, LLC

Donor Spotlight:

How Two Families Help Accelerate Parkinson's Research



Gurley Family Amplifies Impact Through Funding Innovative Research Studies

"When I learned about the type of research the Parkinson's Foundation is funding, studies that might not get funded through a traditional process, that really spoke to me," said Bill Gurley.

For Bill and Amy Gurley, finding a cure to Parkinson's disease (PD) is personal. After watching Bill's mother, Lucia, battle PD, they felt compelled to help solve Parkinson's through funding critical research. "There's so many aspects of Parkinson's you can't even begin to understand," Amy said. "It creates a crisis within a family. Lucia had such a kind heart and to watch her degenerate was the saddest part. She is what drove us to figure out how to be a servant of this."

Bill and Amy generously funded the 2023 Impact Awards, supporting six innovative research studies, each with the potential for a breakthrough. "I've been a venture capitalist my whole life and there's a saying that risk and reward are correlated," said Bill. "If you want to increase the optionality of outsized impact, or discovery, you have to be willing to invest in things that might not be obvious."

One of the things that energize Bill and Amy most about Impact Awards is that each recipient is aiming to find a root cause of Parkinson's, which could result in a monumental impact, including a cure for PD.

"When Parkinson's touches your family, you see how powerful and difficult it is to go through," Bill said. "I can't imagine the impact if you don't have access to resources. I hope that through our efforts, and through the support of other people investing in research, we can find a solution that has more of a permanent impact on this disease."



Gary and Bobby Smith Honor Their Parents' Commitment to Parkinson's Research

From the beginning, Gary Smith, Sr. was a fervent supporter of *PD GENERation*, the global initiative that offers genetic testing and counseling at no cost for people with Parkinson's.

"He was patient number one at University of Kansas (KU) Medical Center," said his son Bobby Smith. "When his doctor shared the initiative with him, he was on board immediately. He was always ready to help whenever he was able — he wanted something different for other people facing this disease."

Now, his sons, Gary Smith, Jr., chairman of the Krupp Smith Family Foundation, and Bobby Smith, president, are proud to honor their late father by supporting the Reach Further campaign and expansion of *PD GENERation*. Thanks to their generosity, the Parkinson's Foundation Krupp Smith Family Foundation Center of Excellence and Gary A. Smith *PD GENERation* Site at KU Medical Center were named in their family and father's honor.

"When a family member is diagnosed with Parkinson's, it is hard to connect to the right resources and find the best care," Gary Jr. said. "If we can help improve understanding of the disease and access to care for other people, that's a big deal and it is really important to us."

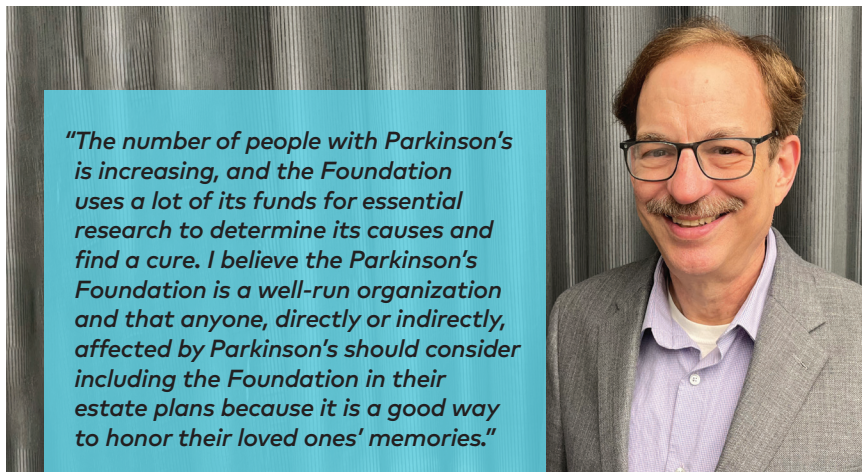
The passion their father had for research continues to inspire Gary Jr. and Bobby. "We were lucky our dad had access to great care, support and educational resources," Bobby said. "My parents were so generous and always looking for ways to help others. By supporting Reach Further, we are expanding access to care, supporting research and honoring our parents' legacy."

There are many ways you can support the fight against Parkinson's. Visit [Parkinson.org/HowToHelp](https://www.parkinson.org/HowToHelp).

Parkinson's Foundation Legacy Society

The Parkinson's Foundation recognizes and honors all Legacy Society members who support the Foundation in their wills, trusts, life income gifts, retirement plans and other planned gifts. Legacy Society members leave meaningful, lasting legacies for future generations.

Lester Nathan Leaves a Legacy Through His Estate Plan



"The number of people with Parkinson's is increasing, and the Foundation uses a lot of its funds for essential research to determine its causes and find a cure. I believe the Parkinson's Foundation is a well-run organization and that anyone, directly or indirectly, affected by Parkinson's should consider including the Foundation in their estate plans because it is a good way to honor their loved ones' memories."

– Lester Nathan

Before his aunt, Mechtild Eisner, was diagnosed with Parkinson's, Lester Nathan was not aware of the Parkinson's Foundation. Since learning more about PD and the resources the Foundation offers people living with the disease, Lester was inspired to add the Parkinson's Foundation to his estate plans, making him a member of our Legacy Society. "I want to make sure that part of my estate will continue to help the charities I support, including the Parkinson's Foundation," Lester said. "In a way, this bequest also helps me continue my legacy and honor my aunt."

After learning more about Parkinson's and other neurological conditions, Lester was inspired by the Foundation's efforts to support research devoted to understanding what causes PD, which will lead to new treatments.

As a Legacy Society member, Lester supports advances in research and resources, which help people live better with Parkinson's disease every day.

Learn more about the Legacy Society and planned giving options at Parkinson.org/PlannedGiving.

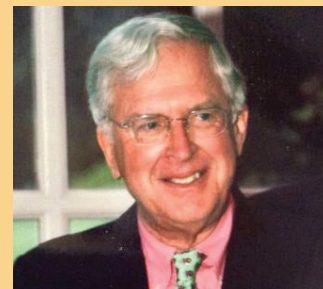
In Memoriam

Lucien J. Côté, MD



We remember the legacy of Lucien J. Côté, MD, one of the most respected and beloved Parkinson's doctors in the U.S. For more than 60 years, Dr. Côté served on the neurology faculty at Columbia University Irving Medical Center, a Parkinson's Foundation Center of Excellence. In 2014, he received our Lifetime Achievement Award.

Richard "Dick" D. Field



We honor the loss of emeritus board member Richard "Dick" D. Field, who served as a board member from 2013 to 2021. Co-founder of LendingTree and founder of Richard D. Field Associates, Dick was a financial services industry leader and mentor. After his Parkinson's diagnosis, he served the Foundation as a passionate advocate and fundraiser, playing an instrumental role in funding ground-breaking initiatives in PD care and research.



Moving Day, A Walk for Parkinson's

At Moving Day, we honor loved ones, raise funds, fight Parkinson's disease and celebrate movement — proven to help manage Parkinson's symptoms. Join a team, become a sponsor or volunteer to help beat Parkinson's at one of our 53 events taking place in 2024.

After being diagnosed with Parkinson's, Kathleen Ortiz attended Moving Day looking for hope. Today, she volunteers to provide hope to others. "In order to give the next person who will be diagnosed more hope than I had, we have to get out there and walk, raise money and talk about Parkinson's. Volunteering with the Parkinson's Foundation has taken me into a direction I never thought I would go. At Moving Day, I feel accepted — and that feels so good. I will do anything I can to help someone else find that comforting feeling."

Move with your community at Moving Day and help make life better for people with Parkinson's. Find your nearest Moving Day at MovingDayWalk.org.



\$4.8M

Raised in 2023



46

Events in 2023



\$44.8M

Raised since 2011



13,000

Participants in 2023

Top 10 Moving Day Participants

Amount Raised in 2023

- \$49,428** Sherwin Zuckerman *Chicago*
- \$39,950** Andrew Albert *Chicago*
- \$33,047** Christine Howard *Twin Cities*
- \$25,043** Susan Brown *Atlanta*
- \$19,420** John Kolaya *New Jersey*

- \$19,077** Jan Wuliger *Tampa Bay*
- \$18,305** Laura Morris *Chicago*
- \$15,435** Carey Durham *Dallas/Fort Worth*
- \$14,381** Shari Wolf *Chicago*
- \$13,380** Margaret Samaha *Santa Fe*

Parkinson's Champions



Karan Rai ran 7 marathons, in 7 days, on 7 continents raising more than \$80,000 in honor of his Dad, Rajit. "One of the lessons my dad taught me early on

is you're meant to test your limits and if you're going to do that, find a cause that's near and dear to your heart and raise awareness and money for it."

Become a Parkinson's Champion at Parkinson.org/Champions.



\$3.5M Raised
in 2023



11,790
Miles Run



45 Pickleball
Games Played



305 Dogs
Walked

Our Parkinson's Champions are energized to help us beat Parkinson's. Champions have raised \$21 million to make life better for people with Parkinson's. We thank all Parkinson's Champions and recognize our top fundraisers of 2023.

Top 10 Parkinson's Champions

Karan Rai	World Marathon Challenge	\$80,374
Mike Debartolo	Playing for Parkinson's	\$76,646
Roland Frankel	Graeme Frankel Memorial Golf Tournament	\$70,145
Christian Spence	Going the Distance for PD	\$22,200
Steven Goode	The Great American Scenic Byways Tour	\$21,795
Paul Farahvar	Comedy Night at Zanie's	\$21,421
Joyce Tracy	Zero Mile Fun Run	\$15,221
Carl Munyon	60th Birthday Golf Tournament	\$14,992
MIG Bearden	Pickleball for Parkinson's	\$12,435
Joe Violi	Jimmy Violi Memorial Golf Tournament	\$8,800

Top 10 Parkinson's Champions: Endurance Race

Jamie Harrison	2023 TCS NYC Marathon	\$38,483
Bruce Braswell	2023 TCS NYC Marathon	\$29,432
Liz Hughes	2023 TCS NYC City Marathon	\$28,000
Craig Fuller	2023 TCS NYC City Marathon	\$14,250
Amy Gottlieb	2023 Falmouth Road Race	\$13,028
Ladd Harrison	2023 TCS NYC Marathon	\$12,895
Annie Taylor	2023 TCS NYC Marathon	\$11,435
Catherine Griggs	2023 TCS NYC Marathon	\$10,968
Saul Qersdyn	2023 TCS NYC Marathon	\$9,350
Melanie Johnson	2023 TCS NYC Marathon	\$8,318

Parkinson's Revolution

Parkinson's Revolution is an indoor cycling fundraiser that combines determination and community to advance our mission toward a cure. We thank all those who rode across **35 cities** and recognize the top 2023 riders. Over the last three years, **4,448 Revolution riders** have raised more than **\$1.5 million!** Learn more at Parkinson.org/Revolution.

Top Parkinson's Revolution Riders

Melanie Hannon	Chicago	\$17,878
Deborah Lucchesi	San Francisco	\$12,388
Jennifer Goldman	USA	\$11,165
Chas Schaner	Grand Rapids	\$11,050
Brett Pinegar	Salt Lake City	\$11,010



Parkinson's Revolution San Francisco



Parkinson's Revolution Buffalo

2022-2023

Audited Financial Highlights

As illustrated below, the Parkinson's Foundation directed **81%** of its 2022-2023 spending on mission-related activities and **19%** on fundraising and management combined.*

Total Revenue

\$48,333,484

Total Year-End Assets

\$47,034,483

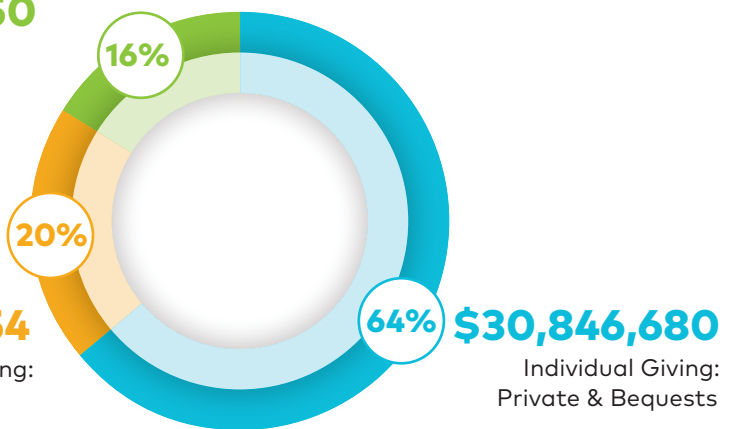
REVENUE by Category

\$7,899,450

Special Events,
Peer to Peer
& All Other**

\$9,587,354

Institutional Giving:
Corporate &
Foundation



Total Operating Expenses

100% | \$48,541,314

Subtotal Mission-Related

81% | \$39,308,989

Fundraising

14% | \$6,560,910

General & Administration

5% | \$2,671,415

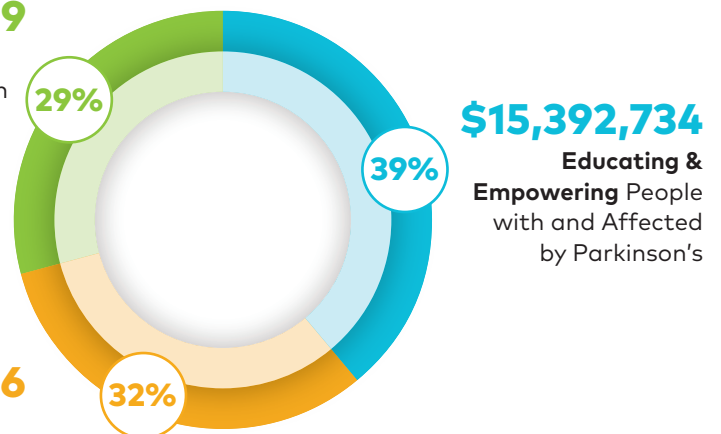
MISSION-RELATED EXPENSES by Category

\$11,342,739

Ensuring Better
Outcomes through
Improved **Care**

\$12,573,516

Understanding
Parkinson's
through **Research**



BOARD OF DIRECTORS

Parkinson's Foundation Board of Directors are dedicated volunteers who guide us through their skilled leadership — invaluably setting the course towards an impact-driven mission.



DIRECTORS

J. Gordon Beckham, Jr., Chair
Andrew B. Albert, Vice-Chair
Constance W. Atwell, PhD
Marcia Mondavi Borger
Sarah Brown
Marshall R. Burack, Esq
Alessandro Di Rocco, MD
G. Pennington ("Penn") Egbert, III

Paolo Fresco
Mary Ellen Garrett
Peter Goldman
Stephanie Goldman Rosen
Ponder Harrison
Alison P. Herman, Esq
Travis Scott Howe
Mindy McIlroy
Janis Miyasaki, MD

William R. (Bill) Moler
Howard D. Morgan
James (Jim) E. Morgan, III
Paul H. Nathan
Steve Newton
Joshua Raskin
Veera Rastogi
John D. Thomopoulos, CPA
Christina Weaver Jackson
Adam J. Wolfberg

OFFICERS

John L. Lehr
President & Chief Executive Officer
Constance W. Atwell, PhD
Secretary
Leilani Pearl
Assistant Secretary
Paul H. Nathan
Treasurer
Mark Keavey
Assistant Treasurer

EMERITUS BOARD

Stephen Ackerman
E. Richard Alhadeff, Esq*
Daniel Arty
A. Jeffrey Barash, Esq
Carmen Y. Cartaya, Esq
Stanley Fahn, MD
Richard D. Field*
Patricia de Stacey Harrison
Bernard J. Fogel, MD*
Former Senator Johnny Isakson*
Isobel R. Konecky*
John W. Kozyak, Esq

Harold P. Kravitz*
Arlene Levine
Edythe Kay Marsa*
Robert M. Melzer
Gail Milhous
Paul F. Oreffice
Jo Ann Pepper Oreffice
Lewis P. Rowland*
Alan M. Slewett
Enrique J. Sosa, PhD
Senator Paul B. Steinberg
Robert H. Taurig*

*Passed Away

EXECUTIVE MANAGEMENT TEAM

John L. Lehr
President & Chief Executive Officer
James Beck, PhD
Senior Vice President, Chief Scientific Officer
Yasnahia Cortorreal
Vice President, Chief Human Resources & Administration Officer

Meri-Margaret Deoudes, CFRE
Senior Vice President, Chief Operating Officer
Christiana Evers, MPA
Vice President, Chief Community Engagement Officer
Kayln Henkel
Senior Vice President, Chief Advancement Officer

Mark Keavey
Senior Vice President, Chief Financial Officer
Leilani Pearl
Senior Vice President, Chief Communications Officer
Elizabeth Pollard, MA
Vice President, Chief Education and Training Officer

PEOPLE WITH PARKINSON'S COUNCIL

Mark Kelm, Chair
Vikas Chinnan, Vice Chair
Benjamin Bement
Kathleen Blake, MD, MPH
Elva Brown

Cynthia Finestone
Paula Flisnik
Gregg Hummer
Gil Kim
Mark Milow

John Poma, JD, MBA
Janet Reilly
Tonia Smith
Kenneth Thurman, PhD
Carla Velastegui

**Better Lives.
Together.**

1.800.4PD.INFO
(1-800-473-4636)
Parkinson.org



Parkinson.org



Parkinson.org/Facebook



Parkinson.org/Twitter



Parkinson.org/Instagram



Parkinson.org/YouTube



Parkinson.org/TikTok



200 SE 1st Street, Suite 800
Miami, FL 33131

1359 Broadway, Suite 1509
New York, NY 10018

